

# Section 2

## REAL SECTOR INDICATORS

Table (1) Gross Domestic Product at Market Prices (Current Prices).....	11
Table (2) Gross Domestic Product by Sector at Factor Cost (Current Prices).....	12
Table (3) Distribution of Total Investments by Economic Agents and Production.....	13
Indices for Main Economic Sectors	

**Table ( I ) :Gross Domestic Product (at Market Prices) <sup>1/</sup>**  
(In Current Prices)

	2005/06	2006/07	2007/08	2008/09	2009/10	2010/11 <sup>2/</sup>	(LE Billions) July- September 2011/12*
<b>GDP</b>	<b>617.7</b>	<b>744.8</b>	<b>895.5</b>	<b>1042.2</b>	<b>1206.6</b>	<b>1371.8</b>	<b>402.1</b>
	<b>(14.7)</b>	<b>(20.6)</b>	<b>(20.2)</b>	<b>(16.4)</b>	<b>(15.8)</b>	<b>(13.7)</b>	<b>(10.4)</b>
<b>Domestic Demand</b>	<b>632.8</b>	<b>778.9</b>	<b>945.6</b>	<b>1111.4</b>	<b>1269.8</b>	<b>1425.4</b>	<b>428.7</b>
Final Consumption	517.1	623.6	745.1	911.4	1034.5	1190.9	378.6
Private Consumption	441.2	539.2	647.6	793.1	899.8	1035.9	333.8
Public Consumption	75.9	84.4	97.5	118.3	134.7	155.0	44.8
Investment <sup>3/</sup>	115.7	155.3	200.5	200.0	235.3	234.5	50.1
<b>Net Exports</b>	<b>-15.1</b>	<b>-34.1</b>	<b>-50.1</b>	<b>-69.2</b>	<b>-63.2</b>	<b>-53.6</b>	<b>-26.6</b>
Exports of Goods and Services <sup>4/</sup>	193.2	225.3	295.9	260.1	257.6	282.0	72.3
Imports of Goods and Services	208.3	259.4	346.0	329.3	320.8	335.6	98.9
<b>Memorandum Items: (In Percent of GDP)</b>							
Final Consumption	83.7	83.7	83.2	87.4	85.7	86.8	94.2
Investment <sup>3/</sup>	18.7	20.9	22.4	19.2	19.5	17.1	12.5
Exports of Goods and Services <sup>4/</sup>	31.3	30.2	33.0	25.0	21.3	20.6	18.0
Imports of Goods and Services	33.7	34.8	38.6	31.6	26.6	24.5	24.6

Source: Ministry of Economic Development.

\* Preliminary, subject to change. According to the Ministry of Economic Development, GDP (at market prices) for 2011/2012 is projected to reach LE 1570 billion compared to a revised figure of LE 1371.8 billion in 2010/2011.

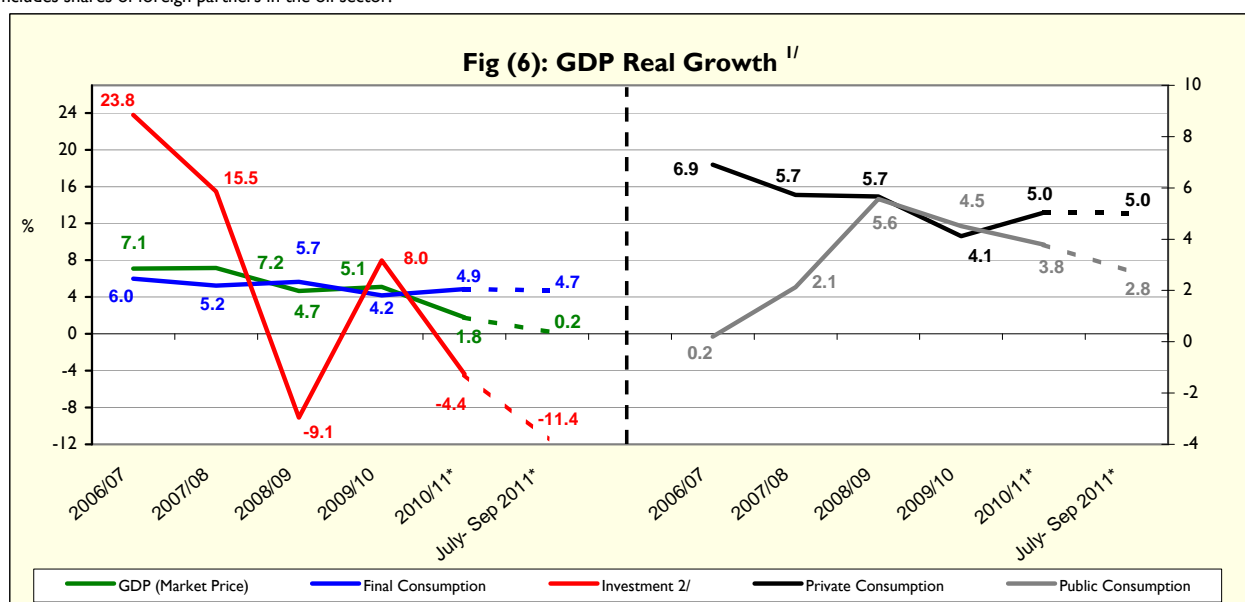
( ) Percent change over same period in the previous year.

1/ Includes net indirect taxes.

2/ It is noteworthy to mention that the Ministry of Economic Development revised GDP data for FY 2010/2011 on a quarterly basis.

3/ Includes fixed capital formation and change in inventory. The change in inventory amounts to LE 5.4 billion during FY 2010/11, compared to LE 3.5 billion during FY 2009/10.

4/ Includes shares of foreign partners in the oil sector.



Source: Ministry of Economic Development.

\* Preliminary, subject to change.

1/ Using 2001/02 prices for the period 2002/03 - 2006/07, and 2006/07 prices for 2007/08, 2008/09, 2009/10 and 2010/11.

2/ Includes fixed capital formation and change in inventory.

**Table ( 2 ) : Gross Domestic Product by Sector (at Factor Cost)**  
(In Current Prices)

							(LE Millions)
	2005/06	2006/07	2007/08	2008/09	2009/10	2010/11 <sup>1/</sup>	July-September 2011/12*
<b>GDP</b>	<b>581,144</b>	<b>710,388</b>	<b>855,302</b>	<b>994,055</b>	<b>1,150,590</b>	<b>1,309,906</b>	<b>386,001</b>
	(14.7)	(22.2)	(20.4)	(16.2)	(15.7)	(13.8)	(10.6)
<b>Total Commodity Sector</b>	<b>305,094</b>	<b>360,530</b>	<b>436,727</b>	<b>508,001</b>	<b>591,903</b>	<b>682,156</b>	<b>209,963</b>
	(17.7)	(18.2)	(21.1)	(16.3)	(16.5)	(15.2)	(11.8)
<b>Agriculture, Forestry and Fishing</b>	81,766	99,953	113,104	135,465	160,970	190,159	68,154
<b>Extractive Industry</b>	89,834	103,656	133,674	147,966	165,747	195,136	63,469
Petroleum	40,586	44,059	56,722	61,759	68,538	81,566	27,238
Natural Gas	48,311	56,590	73,495	82,206	92,538	108,206	34,810
	(75.3)	(17.1)	(29.9)	(11.9)	(12.6)	(16.9)	(15.9)
Other	937	3,007	3,457	4,001	4,671	5,364	1,421
<b>Manufacturing Industry</b>	98,693	114,475	139,003	164,523	194,290	216,184	57,777
Petroleum Refinement	5,601	6,055	7,922	10,257	12,516	14,829	4,226
Other	93,092	108,420	131,081	154,266	181,774	201,355	53,551
<b>Electricity</b>	8,880	9,880	11,507	13,043	14,897	16,832	4,869
<b>Water</b>	2,158	2,390	2,659	2,977	3,390	3,775	1,062
<b>Construction and Building</b>	23,763	30,175	36,780	44,026	52,609	60,070	14,632
	(18.2)	(27.0)	(21.9)	(19.7)	(19.5)	(14.2)	(3.5)
<b>Total Production Services</b>	<b>183,567</b>	<b>233,052</b>	<b>279,606</b>	<b>318,566</b>	<b>364,518</b>	<b>404,837</b>	<b>114,996</b>
	(12.7)	(27.0)	(20.0)	(13.9)	(14.4)	(11.1)	(7.4)
Transport and Warehousing	24,519	29,549	34,790	40,962	47,400	53,351	16,043
Telecommunications	11,974	23,062	27,151	31,185	34,818	37,301	9,088
Suez Canal	23,399	24,084	28,729	26,826	25,803	29,311	8,202
	(16.1)	(2.9)	(19.3)	-(6.6)	-(3.8)	(13.6)	(10.0)
Wholesale and Retail Trade	63,583	77,675	93,382	113,398	133,774	150,658	42,501
Financial Intermediation	28,798	27,531	31,756	36,125	41,174	44,834	13,807
Insurance and Social Insurance	12,497	26,372	31,375	35,689	41,521	47,627	13,321
Tourism (Hotels and Restaurants)	18,798	24,778	32,424	34,382	40,028	41,755	12,034
	(12.5)	(31.8)	(30.9)	(6.0)	(16.4)	(4.3)	-(2.4)
<b>Total Social Services</b>	<b>92,483</b>	<b>116,806</b>	<b>138,970</b>	<b>167,488</b>	<b>194,170</b>	<b>222,912</b>	<b>61,042</b>
	(9.5)	(26.3)	(19.0)	(20.5)	(15.9)	(14.8)	(13.0)
Real Estate	19,055	20,943	23,334	26,575	30,262	34,066	9,319
General Government	56,930	64,220	79,737	98,575	114,944	133,688	35,555
Education	3,496	8,376	9,492	11,133	12,828	14,558	4,127
Health	6,563	9,908	10,961	12,971	14,797	16,595	4,920
Other Services <sup>2/</sup>	6,439	13,359	15,446	18,234	21,339	24,005	7,121

Source: Ministry of Economic Development.

( ) Percent change over same period in the previous year.

\* Preliminary, subject to change.

1/ It is noteworthy to mention that the Ministry of Economic Development revised revising GDP data for FY 2010/2011 on a quarterly basis.

2/ Includes sewage services and information.

**Table ( 3 ) : Distribution of Total Investments by Economic Agents**  
**( July - September 2011/2012 \*) <sup>1/</sup>**

	(LE Millions)					
	Government	Economic Authorities	Public Business Sector	Private Business Sector	Total	% to Total Investments
<b>Total Investments</b>	<b>8344.8</b>	<b>1459.7</b>	<b>5053.7</b>	<b>31291.7</b>	<b>46149.9</b>	<b>100</b>
<b>Commodity Sector</b>	<b>1654.5</b>	<b>275</b>	<b>4071</b>	<b>13584</b>	<b>19584</b>	<b>42.4</b>
Agriculture, Irrigation & Fishing	439	3	--	614	<b>1056</b>	2.3
Crude Oil, Mining & Natural Gas	1	3	772	9250	<b>10025</b>	21.7
Manufacturing Industries & Petroleum Products	11	8	268	3520	<b>3808</b>	8.3
Electricity & Water	1184	260	2859	--	<b>4303</b>	9.3
Construction & Building	21	--	172	200	<b>392</b>	0.8
<b>Production Services</b>	<b>1956.2</b>	<b>664</b>	<b>969</b>	<b>8208</b>	<b>11797</b>	<b>25.6</b>
Transportation & Communication <sup>2/</sup>	1944	634	751	5407.7	<b>8737</b>	18.9
Wholesale & Retail Trade	--	22	16	1800	<b>1838</b>	4.0
Financial Services, Insurance and Social solidarity	12	8	102	--	<b>122</b>	0.3
Tourism	0.4	--	100	1000	<b>1100</b>	2.4
<b>Social Services</b>	<b>4734</b>	<b>521</b>	<b>14</b>	<b>9500</b>	<b>14769</b>	<b>32.0</b>
Housing and Real Estate Activities	47	287	--	8000	<b>8334</b>	18.1
Educational Services	806	33	--	400	<b>1239</b>	2.7
Health Services	360	14	--	300	<b>674</b>	1.5
Other Services <sup>3/</sup>	3522	187	14	800	<b>4523</b>	9.8
<b>Memorandum Items: Production Indices for Main Economic Sectors (2002 = 100)</b>						
	2009/2010	2010/11				2011/2012
	Apr-Jun	Jul-Sep	Oct-Dec	Jan-Mar	Apr-Jun	Jul-Sep
<b>General Index</b>	<b>182.3</b>	<b>175.4</b>	<b>174.5</b>	<b>162.3</b>	<b>172.7</b>	<b>168.2</b>
Manufacturing Industries <sup>4/</sup>	144.9	130.8	136.9	128.2	170.2	140.1
Oil Products	149.9	156.7	144.4	154.1	144.3	143.2
Natural Gas	173.2	170.1	163.9	183.6	190.3	186.2
Electricity	179.1	177.5	173.7	166.0	183.9	182.2
Construction	163.7	217.1	179.8	191.1	166.5	206.7
Transportation <sup>5/</sup>	85.4	82.8	85.0	83.6	75.2	66.4
Suez Canal <sup>6/</sup>	242.4	243.6	239.1	275.0	276.8	264.0
Tourism	377.5	333.9	346.7	260.1	246.2	280.3

Source: Ministry of Economic Development.

\* Preliminary, subject to change.

-- Data unavailable.

1/ Excluding change in inventory.

2/ Including Suez Canal.

3/ Including information, sewage services, and resettlements.

4/ Manufacturing index was revised in September 2011.

5/ Excluding Suez Canal.

6/ Based on Suez Canal receipts in US dollars.