

Section 2

REAL SECTOR INDICATORS

Table (1) Gross Domestic Product at Market Prices (Current Prices).....	11
Table (2) Gross Domestic Product by Sector at Factor Cost (Current Prices).....	12
Table (3) Distribution of Total Investments by Economic Agents and Production.....	13
Indices for Main Economic Sectors	

Table (I) :Gross Domestic Product (at Market Prices) ^{1/}
(In Current Prices)

	2005/06	2006/07	2007/08	2008/09	2009/10	2010/11 ^{2/}	(LE Billions) July-MAR 2011/12*
GDP	617.7	744.8	895.5	1042.2	1206.6	1371.8	1141.9
	(14.7)	(20.6)	(20.2)	(16.4)	(15.8)	(13.7)	(14.7)
Domestic Demand	632.8	778.9	945.6	1111.4	1269.8	1425.4	1229.3
Final Consumption	517.1	623.6	745.1	911.4	1034.5	1190.9	1051.2
Private Consumption	441.2	539.2	647.6	793.1	899.8	1035.9	922.5
Public Consumption	75.9	84.4	97.5	118.3	134.7	155.0	128.7
Investment ^{3/}	115.7	155.3	200.5	200.0	235.3	234.5	178.1
Net Exports	-15.1	-34.1	-50.1	-69.2	-63.2	-53.6	-87.4
Exports of Goods and Services ^{4/}	193.2	225.3	295.9	260.1	257.6	282.0	213.0
Imports of Goods and Services	208.3	259.4	346.0	329.3	320.8	335.6	300.4
Memorandum Items: (In Percent of GDP)							
Final Consumption	83.7	83.7	83.2	87.4	85.7	86.8	92.1
Investment ^{3/}	18.7	20.9	22.4	19.2	19.5	17.1	15.6
Exports of Goods and Services ^{4/}	31.3	30.2	33.0	25.0	21.3	20.6	18.7
Imports of Goods and Services	33.7	34.8	38.6	31.6	26.6	24.5	26.3

Source: Ministry of Economic Development.

* Preliminary, subject to change. According to the Ministry of Planning, GDP (at market prices) for 2011/2012 is projected to reach LE 1546.2 billion compared to a revised figure of LE 1371.8 billion in 2010/2011.

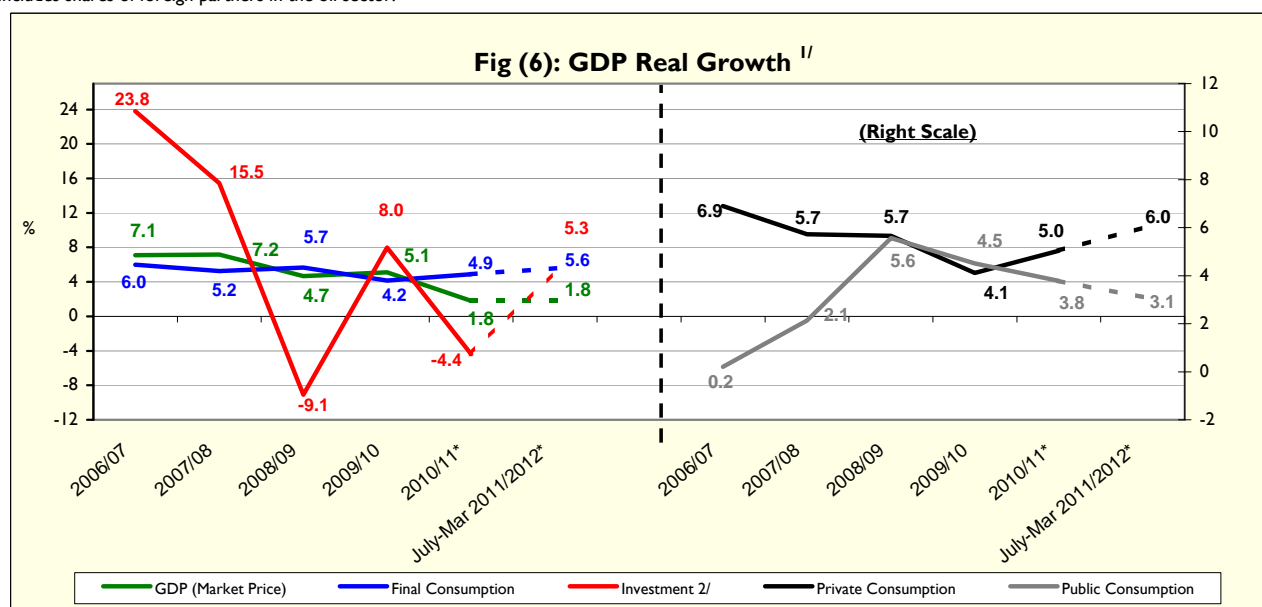
() Percent change over same period in the previous year.

1/ Includes net indirect taxes.

2/ It is noteworthy to mention that the Ministry of Economic Development revised GDP data for FY 2010/2011 on a quarterly basis.

3/ Includes fixed capital formation and change in inventory. The change in inventory amounts to LE 14 billion during the period July-March 2011/12, compared to LE 2.6 billion during the same period in 2010/11.

4/ Includes shares of foreign partners in the oil sector.



Source: Ministry of Economic Development.

* Preliminary, subject to change.

1/ Using 2001/02 prices for the period 2002/03 - 2006/07, and 2006/07 prices for 2007/08, 2008/09, 2009/10 and 2010/11.

2/ Includes fixed capital formation and change in inventory.

Table (2) : Gross Domestic Product by Sector (at Factor Cost)
(In Current Prices)

							(LE Millions)
	2005/06	2006/07	2007/08	2008/09	2009/10	2010/11 ^{1/}	July-Mar 2011/12*
GDP	581,144	710,388	855,302	994,055	1,150,590	1,309,906	1,094,080
	(14.7)	(22.2)	(20.4)	(16.2)	(15.7)	(13.8)	(11.9)
Total Commodity Sector	305,094	360,530	436,727	508,001	591,903	682,156	573,774
	(17.7)	(18.2)	(21.1)	(16.3)	(16.5)	(15.2)	(13.0)
Agriculture, Forestry and Fishing	81,766	99,953	113,104	135,465	160,970	190,159	169,207
Extractive Industry	89,834	103,656	133,674	147,966	165,747	195,136	163,453
Petroleum	40,586	44,059	56,722	61,759	68,538	81,566	69,077
Natural Gas	48,311	56,590	73,495	82,206	92,538	108,206	89,921
	(75.3)	(17.1)	(29.9)	(11.9)	(12.6)	(16.9)	(16.2)
Other	937	3,007	3,457	4,001	4,671	5,364	4,455
Manufacturing Industry	98,693	114,475	139,003	164,523	194,290	216,184	175,980
Petroleum Refinement	5,601	6,055	7,922	10,257	12,516	14,829	12,733
Other	93,092	108,420	131,081	154,266	181,774	201,355	163,247
Electricity	8,880	9,880	11,507	13,043	14,897	16,832	14,079
Water	2,158	2,390	2,659	2,977	3,390	3,775	3,192
Construction and Building	23,763	30,175	36,780	44,026	52,609	60,070	47,863
	(18.2)	(27.0)	(21.9)	(19.7)	(19.5)	(14.2)	(10.6)
Total Production Services	183,567	233,052	279,606	318,566	364,518	404,837	337,006
	(12.7)	(27.0)	(20.0)	(13.9)	(14.4)	(11.1)	(9.7)
Transport and Warehousing	24,519	29,549	34,790	40,962	47,400	53,351	42,563
Telecommunications	11,974	23,062	27,151	31,185	34,818	37,301	28,276
Suez Canal	23,399	24,084	28,729	26,826	25,803	29,311	23,089
	(16.1)	(2.9)	(19.3)	-(6.6)	-(3.8)	(13.6)	(7.7)
Wholesale and Retail Trade	63,583	77,675	93,382	113,398	133,774	150,658	128,262
Financial Intermediation	28,798	27,531	31,756	36,125	41,174	44,834	39,532
Insurance and Social Insurance	12,497	26,372	31,375	35,689	41,521	47,627	40,090
Tourism (Hotels and Restaurants)	18,798	24,778	32,424	34,382	40,028	41,755	35,194
	(12.5)	(31.8)	(30.9)	(6.0)	(16.4)	(4.3)	(6.3)
Total Social Services	92,483	116,806	138,970	167,488	194,170	222,912	183,300
	(9.5)	(26.3)	(19.0)	(20.5)	(15.9)	(14.8)	(12.9)
Real Estate	19,055	20,943	23,334	26,575	30,262	34,066	26,887
General Government	56,930	64,220	79,737	98,575	114,944	133,688	110,030
Education	3,496	8,376	9,492	11,133	12,828	14,558	12,172
Health	6,563	9,908	10,961	12,971	14,797	16,595	14,056
Other Services ^{2/}	6,439	13,359	15,446	18,234	21,339	24,005	20,155

Source: Ministry of Economic Development.

() Percent change over same period in the previous year.

* Preliminary, subject to change.

1/ It is noteworthy to mention that the Ministry of Economic Development revised revising GDP data for FY 2010/2011 on a quarterly basis.

2/ Includes sewage services and information.

Table (3) : Distribution of Total Investments by Economic Agents
(July - March 2011/2012 *)^{1/}

	(LE Millions)					
	Government	Economic Authorities	Public Business Sector	Private Business Sector	Total	% to Total Investments
Total Investments	24973.2	7839.2	21131.1	110170.7	164114	100
Commodity Sector	4818.9	1686	15517	44002	66024	40.2
Agriculture, Irrigation & Fishing	1933	18	0.2	1787	3739	2.3
Crude Oil, Mining & Natural Gas	3	3.7	2762	31770	34538	21.0
Manufacturing Industries & Petroleum Products	100	19	1171	9815	11104	6.8
Electricity & Water	2721	1646	11082	0	15448	9.4
Construction & Building	63	0	502	630	1195	0.7
Production Services	6046.1	1996	5577	30919	44537	27.1
Transportation & Communication ^{2/}	5988	1687	4230	20819	32724	19.9
Wholesale & Retail Trade	0	255	78	6300	6633	4.0
Financial Services, Insurance and Social solidarity	55	43	868	0	966	0.6
Tourism	2.8	12	400	3800	4215	2.6
Social Services	14108	4157	38	35250	53553	32.6
Housing and Real Estate Activities	126	1021	0	29000	30147	18.4
Educational Services	3052	114	0	1700	4866	3.0
Health Services	1222	67	0	1350	2639	1.6
Other Services ^{3/}	9708	2956	38	3200	15902	9.7
Memorandum Items: Production Indices for Main Economic Sectors (2002 = 100)						
	2010/11			2011/2012		
	Oct-Dec	Jan-Mar	Apr-Jun	Jul-Sep	Oct- Dec	Jan- Mar
General Index	174.5	162.3	172.7	168.2	169.7	188.9
Manufacturing Industries ^{4/}	136.9	128.2	170.2	140.1	146.9	155.0
Oil Products	144.4	154.1	144.3	143.2	140.3	146.5
Natural Gas	163.9	183.6	190.3	186.2	184.5	204.6
Electricity	173.7	166.0	183.9	182.2	178.1	191.8
Construction	179.8	191.1	166.5	206.7	195.7	226.4
Transportation ^{5/}	85.0	83.6	75.2	66.4	76.2	85.6
Suez Canal ^{6/}	239.1	275.0	276.8	264.0	251.2	282.8
Tourism	346.7	260.1	246.2	280.3	278.8	332.5

Source: Ministry of Economic Development.

* Preliminary, subject to change.

-- Data unavailable.

1/ Excluding change in inventory.

2/ Including Suez Canal.

3/ Including information, sewage services, and replacing and maintenance of assets.

4/ Manufacturing index was revised in September 2011.

5/ Excluding Suez Canal.

6/ Based on Suez Canal receipts in US dollars.