

Section 2

REAL SECTOR INDICATORS

Table (1) Gross Domestic Product at Market Prices (Current Prices).....11

Table (2) Gross Domestic Product by Sector at Factor Cost (Current Prices).....12

Table (3) Distribution of Total Investments by Economic Agents and Production.....13

Indices for Main Economic Sectors

Table (I) :Gross Domestic Product (at Market Prices) ^{1/}
(In Current Prices)

(LE Billions)

	2005/06	2006/07	2007/08	2008/09	2009/10	2010/11	2011/12* ^{2/}
GDP	617.7	744.8	895.5	1042.2	1206.6	1371.1	1542.3
	(14.7)	(20.6)	(20.2)	(16.4)	(15.8)	(13.6)	(12.5)
Domestic Demand	632.8	778.9	945.6	1111.4	1269.8	1427.6	1660.3
Final Consumption	517.1	623.6	745.1	911.4	1034.5	1193.1	1402.2
Private Consumption	441.2	539.2	647.6	793.1	899.8	1036.1	1223.2
Public Consumption	75.9	84.4	97.5	118.3	134.7	157.0	179.0
Investment ^{3/}	115.7	155.3	200.5	200.0	235.3	234.5	258.1
Net Exports	-15.1	-34.1	-50.1	-69.2	-63.2	-56.5	-118.0
Exports of Goods and Services ^{4/}	193.2	225.3	295.9	260.1	257.6	282.0	286.1
Imports of Goods and Services	208.3	259.4	346.0	329.3	320.8	338.5	404.1
Memorandum Items: (In Percent of GDP)							
Final Consumption	83.7	83.7	83.2	87.4	85.7	87.0	90.9
Investment ^{3/}	18.7	20.9	22.4	19.2	19.5	17.1	16.7
Exports of Goods and Services ^{4/}	31.3	30.2	33.0	25.0	21.3	20.6	18.6
Imports of Goods and Services	33.7	34.8	38.6	31.6	26.6	24.7	26.2

Source: Ministry of Planning and International Cooperation

* Preliminary, subject to change. According to the Ministry of Planning, GDP (at market prices) for 2012/2013 is projected to reach LE 1778 billion compared to a revised figure of LE 1542.3 billion in 2011/2012.

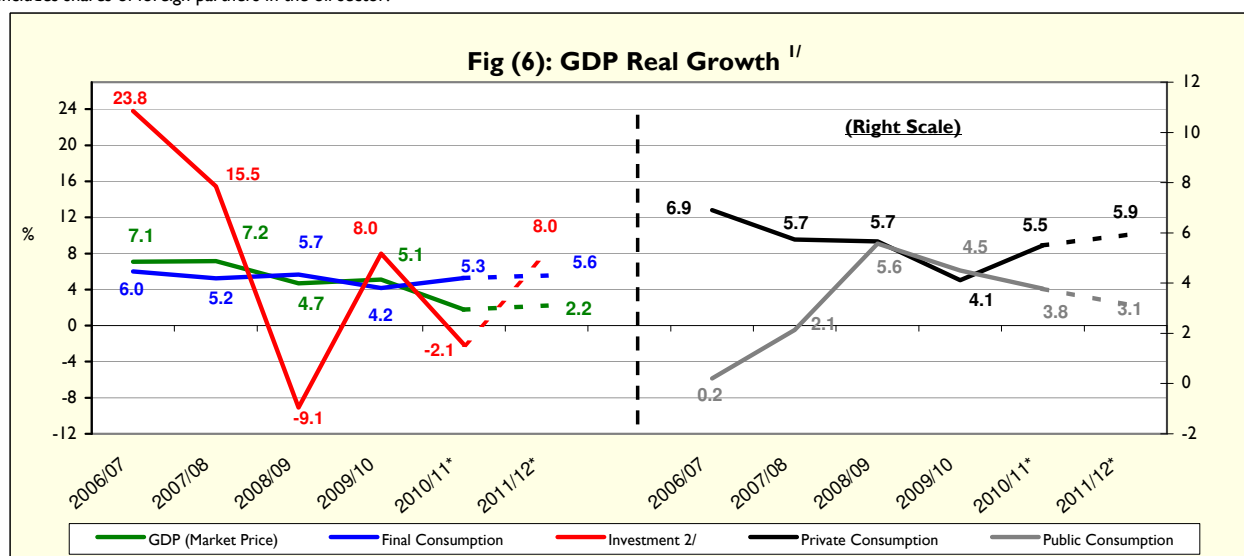
() Percent change over same period in the previous year.

1/ Includes net indirect taxes.

2/ It is noteworthy to mention that the Ministry of Economic Development revised GDP data for FY 2010/2011 on a quarterly basis.

3/ Includes fixed capital formation and change in inventory. The change in inventory amounts to LE 22 billion during 2011/12, compared to LE 5.4 billion during 2010/11.

4/ Includes shares of foreign partners in the oil sector.



Source: Ministry of Planning and International Cooperation

* Preliminary, subject to change.

1/ Using 2001/02 prices for the period 2002/03 - 2006/07, and 2006/07 prices for the period from 2007/08 to 2011/12..

2/ Includes fixed capital formation and change in inventory.

Table (2) : Gross Domestic Product by Sector (at Factor Cost)
(In Current Prices)

(LE Millions)

	2005/06	2006/07	2007/08	2008/09	2009/10	2010/11	2011/12 ^{*1/}
GDP	581,144	710,388	855,302	994,055	1,150,590	1,309,906	1,475,326
	(14.7)	(22.2)	(20.4)	(16.2)	(15.7)	(13.8)	(12.6)
Total Commodity Sector	305,094	360,530	436,727	508,001	591,903	682,156	775,670
	(17.7)	(18.2)	(21.1)	(16.3)	(16.5)	(15.2)	(13.7)
Agriculture, Forestry and Fishing	81,766	99,953	113,104	135,465	160,970	190,159	218,216
Extractive Industry	89,834	103,656	133,674	147,966	165,747	195,136	228,384
Petroleum	40,586	44,059	56,722	61,759	68,538	81,566	96,054
Natural Gas	48,311	56,590	73,495	82,206	92,538	108,206	126,318
	(75.3)	(17.1)	(29.9)	(11.9)	(12.6)	(16.9)	(16.7)
Other	937	3,007	3,457	4,001	4,671	5,364	6,012
Manufacturing Industry	98,693	114,475	139,003	164,523	194,290	216,184	238,369
Petroleum Refinement	5,601	6,055	7,922	10,257	12,516	14,829	16,923
Other	93,092	108,420	131,081	154,266	181,774	201,355	221,446
Electricity	8,880	9,880	11,507	13,043	14,897	16,832	19,080
Water	2,158	2,390	2,659	2,977	3,390	3,775	4,239
Construction and Building	23,763	30,175	36,780	44,026	52,609	60,070	67,382
	(18.2)	(27.0)	(21.9)	(19.7)	(19.5)	(14.2)	(12.2)
Total Production Services	183,567	233,052	279,606	318,566	364,518	404,837	445,903
	(12.7)	(27.0)	(20.0)	(13.9)	(14.4)	(11.1)	(10.1)
Transport and Warehousing	24,519	29,549	34,790	40,962	47,400	53,351	60,513
Telecommunications	11,974	23,062	27,151	31,185	34,818	37,301	38,670
Suez Canal	23,399	24,084	28,729	26,826	25,803	29,311	31,203
	(16.1)	(2.9)	(19.3)	-(6.6)	-(3.8)	(13.6)	(6.5)
Wholesale and Retail Trade	63,583	77,675	93,382	113,398	133,774	150,658	166,330
Financial Intermediation	28,798	27,531	31,756	36,125	41,174	44,834	49,741
Insurance and Social Insurance	12,497	26,372	31,375	35,689	41,521	47,627	53,663
Source: Ministry of Planning and International C	18,798	24,778	32,424	34,382	40,028	41,755	45,783
	(12.5)	(31.8)	(30.9)	(6.0)	(16.4)	(4.3)	(9.6)
Total Social Services	92,483	116,806	138,970	167,488	194,170	222,912	253,753
	(9.5)	(26.3)	(19.0)	(20.5)	(15.9)	(14.8)	(13.8)
Real Estate	19,055	20,943	23,334	26,575	30,262	34,066	38,035
General Government	56,930	64,220	79,737	98,575	114,944	133,688	153,984
Education	3,496	8,376	9,492	11,133	12,828	14,558	16,229
Health	6,563	9,908	10,961	12,971	14,797	16,595	18,560
Other Services ^{2/}	6,439	13,359	15,446	18,234	21,339	24,005	26,945

Source: Ministry of Planning and International Cooperation.

() Percent change over same period in the previous year.

* Preliminary, subject to change.

1/ It is noteworthy to mention that the Ministry of Planning revised revising GDP data for FY 2010/2011 on a quarterly basis.

Table (3) : Distribution of Total Investments by Economic Agents
(2011/2012 *) ^{1/}

(LE Millions)						
	Government	Economic Authorities	Public Business Sector	Private Business Sector	Total	% to Total Investments
Total Investments	34279	20358	30201	151229	236067	100
Commodity Sector	6897	14148	20915	65115	107075	45.4
Agriculture, Irrigation & Fishing	2414	24	0.2	2698	5136	2.2
Crude Oil, Mining & Natural Gas	3	11946	3230	43050	58228	24.7
Manufacturing Industries & Petroleum Products	143	20	1839	18477	20480	8.7
Electricity & Water	4264	2158	15109	-	21530	9.1
Construction & Building	75	-	737	890	1701	0.7
Production Services	8448.3	3229	9236	39939	60852	25.8
Transportation & Communication ^{2/}	8351	2685	7533	26419	44987	19.1
Wholesale & Retail Trade	-	309	108	8520	8937	3.8
Financial Services, Insurance and Social solidarity	94	168	1096	-	1358	0.6
Tourism	3.5	67	500	5000	5570	2.4
Social Services	18934	2981	50	46175	68140	28.9
Housing and Real Estate Activities	119	1243	-	38000	39362	16.7
Educational Services	3471	164	-	2100	5735	2.4
Health Services	1885	111	-	1850	3846	1.6
Other Services ^{3/}	13459	1463	50	4225	19198	8.1
Memorandum Items: Production Indices for Main Economic Sectors (2002 = 100)						
	2010/2011		2011/2012			
	Jan-Mar	Apr-Jun	Jul-Sep	Oct- Dec	Jan- Mar	Apr- Jun
General Index	162.3	172.7	168.2	169.7	188.9	181.2
Manufacturing Industries ^{4/}	128.2	170.2	140.1	146.9	155.0	155.0
Oil Products	154.1	144.3	143.2	140.3	146.5	142.8
Natural Gas	183.6	190.3	186.2	184.5	204.6	204.1
Electricity	166.0	183.9	182.2	178.1	191.8	212.4
Construction	191.1	166.5	206.7	195.7	226.4	170.5
Source: Ministry of Planning and International Cooperation	83.6	75.2	66.4	76.2	85.6	75.3
Suez Canal ^{6/}	275.0	276.8	264.0	251.2	282.8	270.0
Tourism	260.1	246.2	280.3	278.8	332.5	327.5

Source: Ministry of Planning and International Cooperation.

* Preliminary, subject to change.

-- Data unavailable.

1/ Excluding change in inventory.

2/ Including Suez Canal.

3/ Including information, sewage services, and replacing and maintenance of assets.

4/ Manufacturing index was revised in June 20120

5/ Excluding Suez Canal.

6/ Based on Suez Canal receipts in US dollars.

REAL SECTOR
INDICATORS