

Section 2

REAL SECTOR INDICATORS

| | |
|--|----|
| Table (1) Gross Domestic Product at Market Prices (Current Prices)..... | 11 |
| Table (2) Gross Domestic Product by Sector at Factor Cost (Current Prices)..... | 12 |
| Table (3) Distribution of Total Investments by Economic Agents and Production..... | 13 |
| Indices for Main Economic Sectors | |

Table (I) :Gross Domestic Product (at Market Prices) ^{1/}
(In Current Prices)

(LE Billions)

| | 2005/06 | 2006/07 | 2007/08 | 2008/09 | 2009/10 | 2010/11 ^{2/} | 2011/12* ^{2/} |
|--|--------------|--------------|--------------|---------------|---------------|-----------------------|------------------------|
| GDP | 617.7 | 744.8 | 895.5 | 1042.2 | 1206.6 | 1371.1 | 1542.3 |
| | (14.7) | (20.6) | (20.2) | (16.4) | (15.8) | (13.6) | (12.5) |
| Domestic Demand | 632.8 | 778.9 | 945.6 | 1111.4 | 1269.8 | 1427.6 | 1660.3 |
| Final Consumption | 517.1 | 623.6 | 745.1 | 911.4 | 1034.5 | 1193.1 | 1402.2 |
| Private Consumption | 441.2 | 539.2 | 647.6 | 793.1 | 899.8 | 1036.1 | 1223.2 |
| Public Consumption | 75.9 | 84.4 | 97.5 | 118.3 | 134.7 | 157.0 | 179.0 |
| Investment ^{3/} | 115.7 | 155.3 | 200.5 | 200.0 | 235.3 | 234.5 | 258.1 |
| Net Exports | -15.1 | -34.1 | -50.1 | -69.2 | -63.2 | -56.5 | -118.0 |
| Exports of Goods and Services ^{4/} | 193.2 | 225.3 | 295.9 | 260.1 | 257.6 | 282.0 | 286.1 |
| Imports of Goods and Services | 208.3 | 259.4 | 346.0 | 329.3 | 320.8 | 338.5 | 404.1 |
| Memorandum Items: (In Percent of GDP) | | | | | | | |
| Final Consumption | 83.7 | 83.7 | 83.2 | 87.4 | 85.7 | 87.0 | 90.9 |
| Investment ^{3/} | 18.7 | 20.9 | 22.4 | 19.2 | 19.5 | 17.1 | 16.7 |
| Exports of Goods and Services ^{4/} | 31.3 | 30.2 | 33.0 | 25.0 | 21.3 | 20.6 | 18.6 |
| Imports of Goods and Services | 33.7 | 34.8 | 38.6 | 31.6 | 26.6 | 24.7 | 26.2 |

Source: Ministry of Planning and International Cooperation

* Preliminary, subject to change. According to the Ministry of Planning, GDP (at market prices) for 2012/2013 is projected to reach LE 1778 billion compared to a revised figure of LE 1542.3 billion in 2011/2012.

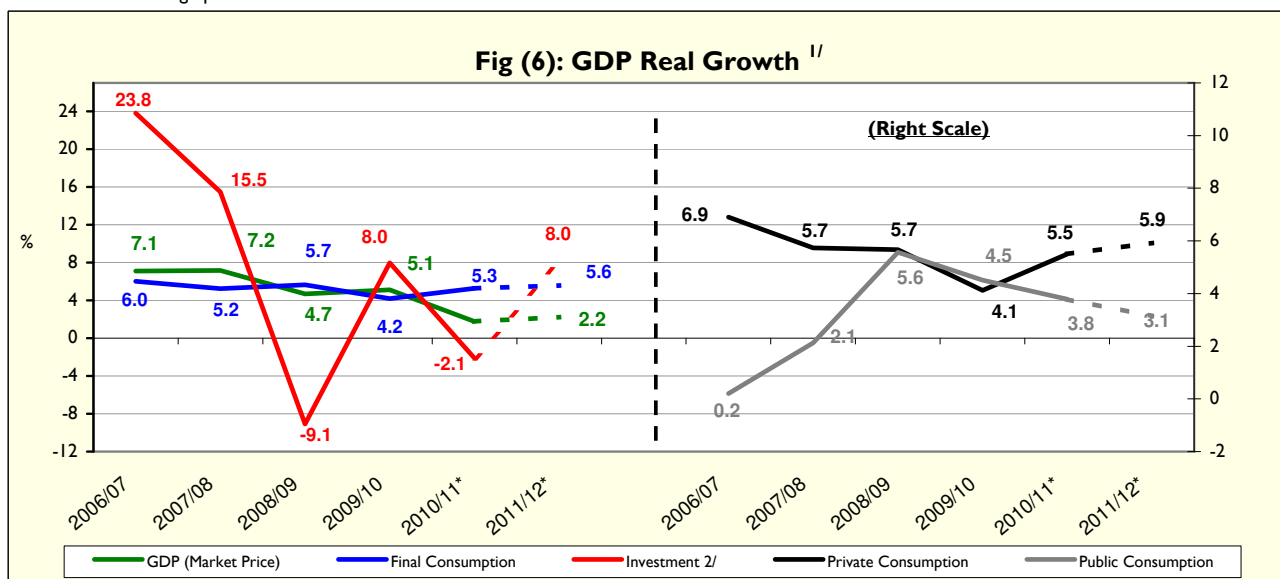
() Percent change over same period in the previous year.

1/ Includes net indirect taxes.

2/ It is noteworthy to mention that the Ministry of Economic Development revised GDP data for FY 2010/2011 on a quarterly basis.

3/ Includes fixed capital formation and change in inventory. The change in inventory amounts to LE 22 billion during 2011/12, compared to LE 5.4 billion during 2010/11.

4/ Includes shares of foreign partners in the oil sector.



Source: Ministry of Planning and International Cooperation

* Preliminary, subject to change.

1/ Using 2001/02 prices for the period 2002/03 - 2006/07, and 2006/07 prices for the period from 2007/08 to 2011/12..

2/ Includes fixed capital formation and change in inventory.

Table (2) : Gross Domestic Product by Sector (at Factor Cost)
(In Current Prices)

(LE Millions)

| | 2005/06 | 2006/07 | 2007/08 | 2008/09 | 2009/10 | 2010/11 | 2011/12* ^{1/} |
|--|----------------|----------------|----------------|----------------|------------------|------------------|------------------------|
| GDP | 581,144 | 710,388 | 855,302 | 994,055 | 1,150,590 | 1,309,906 | 1,475,326 |
| | (14.7) | (22.2) | (20.4) | (16.2) | (15.7) | (13.8) | (12.6) |
| Total Commodity Sector | 305,094 | 360,530 | 436,727 | 508,001 | 591,903 | 682,156 | 775,670 |
| | (17.7) | (18.2) | (21.1) | (16.3) | (16.5) | (15.2) | (13.7) |
| Agriculture, Forestry and Fishing | 81,766 | 99,953 | 113,104 | 135,465 | 160,970 | 190,159 | 218,216 |
| Extractive Industry | 89,834 | 103,656 | 133,674 | 147,966 | 165,747 | 195,136 | 228,384 |
| Petroleum | 40,586 | 44,059 | 56,722 | 61,759 | 68,538 | 81,566 | 96,054 |
| Natural Gas | 48,311 | 56,590 | 73,495 | 82,206 | 92,538 | 108,206 | 126,318 |
| | (75.3) | (17.1) | (29.9) | (11.9) | (12.6) | (16.9) | (16.7) |
| Other | 937 | 3,007 | 3,457 | 4,001 | 4,671 | 5,364 | 6,012 |
| Manufacturing Industry | 98,693 | 114,475 | 139,003 | 164,523 | 194,290 | 216,184 | 238,369 |
| Petroleum Refinement | 5,601 | 6,055 | 7,922 | 10,257 | 12,516 | 14,829 | 16,923 |
| Other | 93,092 | 108,420 | 131,081 | 154,266 | 181,774 | 201,355 | 221,446 |
| Electricity | 8,880 | 9,880 | 11,507 | 13,043 | 14,897 | 16,832 | 19,080 |
| Water | 2,158 | 2,390 | 2,659 | 2,977 | 3,390 | 3,775 | 4,239 |
| Construction and Building | 23,763 | 30,175 | 36,780 | 44,026 | 52,609 | 60,070 | 67,382 |
| | (18.2) | (27.0) | (21.9) | (19.7) | (19.5) | (14.2) | (12.2) |
| Total Production Services | 183,567 | 233,052 | 279,606 | 318,566 | 364,518 | 404,837 | 445,903 |
| | (12.7) | (27.0) | (20.0) | (13.9) | (14.4) | (11.1) | (10.1) |
| Transport and Warehousing | 24,519 | 29,549 | 34,790 | 40,962 | 47,400 | 53,351 | 60,513 |
| Telecommunications | 11,974 | 23,062 | 27,151 | 31,185 | 34,818 | 37,301 | 38,670 |
| Suez Canal | 23,399 | 24,084 | 28,729 | 26,826 | 25,803 | 29,311 | 31,203 |
| | (16.1) | (2.9) | (19.3) | -(6.6) | -(3.8) | (13.6) | (6.5) |
| Wholesale and Retail Trade | 63,583 | 77,675 | 93,382 | 113,398 | 133,774 | 150,658 | 166,330 |
| Financial Intermediation | 28,798 | 27,531 | 31,756 | 36,125 | 41,174 | 44,834 | 49,741 |
| Insurance and Social Insurance | 12,497 | 26,372 | 31,375 | 35,689 | 41,521 | 47,627 | 53,663 |
| Source: Ministry of Planning and International C | 18,798 | 24,778 | 32,424 | 34,382 | 40,028 | 41,755 | 45,783 |
| | (12.5) | (31.8) | (30.9) | (6.0) | (16.4) | (4.3) | (9.6) |
| Total Social Services | 92,483 | 116,806 | 138,970 | 167,488 | 194,170 | 222,912 | 253,753 |
| | (9.5) | (26.3) | (19.0) | (20.5) | (15.9) | (14.8) | (13.8) |
| Real Estate | 19,055 | 20,943 | 23,334 | 26,575 | 30,262 | 34,066 | 38,035 |
| General Government | 56,930 | 64,220 | 79,737 | 98,575 | 114,944 | 133,688 | 153,984 |
| Education | 3,496 | 8,376 | 9,492 | 11,133 | 12,828 | 14,558 | 16,229 |
| Health | 6,563 | 9,908 | 10,961 | 12,971 | 14,797 | 16,595 | 18,560 |
| Other Services ^{2/} | 6,439 | 13,359 | 15,446 | 18,234 | 21,339 | 24,005 | 26,945 |

Source: Ministry of Planning and International Cooperation.

() Percent change over same period in the previous year.

* Preliminary, subject to change.

1/ It is noteworthy to mention that the Ministry of Planning revised GDP data for FY 2010/2011 on a quarterly basis.

Table (3) : Distribution of Total Investments by Economic Agents
(2011/2012 *)^{1/}

| | (LE Millions) | | | | | |
|--|---------------|----------------------|------------------------|-------------------------|---------------|------------------------|
| | Government | Economic Authorities | Public Business Sector | Private Business Sector | Total | % to Total Investments |
| Total Investments | 34279 | 20358 | 30201 | 151229 | 236067 | 100 |
| Commodity Sector | 6897 | 14148 | 20915 | 65115 | 107075 | 45.4 |
| Agriculture, Irrigation & Fishing | 2414 | 24 | 0.2 | 2698 | 5136 | 2.2 |
| Crude Oil, Mining & Natural Gas | 3 | 11946 | 3230 | 43050 | 58228 | 24.7 |
| Manufacturing Industries & Petroleum Products | 143 | 20 | 1839 | 18477 | 20480 | 8.7 |
| Electricity & Water | 4264 | 2158 | 15109 | - | 21530 | 9.1 |
| Construction & Building | 75 | - | 737 | 890 | 1701 | 0.7 |
| Production Services | 8448.3 | 3229 | 9236 | 39939 | 60852 | 25.8 |
| Transportation & Communication ^{2/} | 8351 | 2685 | 7533 | 26419 | 44987 | 19.1 |
| Wholesale & Retail Trade | - | 309 | 108 | 8520 | 8937 | 3.8 |
| Financial Services, Insurance and Social solidarity | 94 | 168 | 1096 | - | 1358 | 0.6 |
| Tourism | 3.5 | 67 | 500 | 5000 | 5570 | 2.4 |
| Social Services | 18934 | 2981 | 50 | 46175 | 68140 | 28.9 |
| Housing and Real Estate Activities | 119 | 1243 | - | 38000 | 39362 | 16.7 |
| Educational Services | 3471 | 164 | - | 2100 | 5735 | 2.4 |
| Health Services | 1885 | 111 | - | 1850 | 3846 | 1.6 |
| Other Services ^{3/} | 13459 | 1463 | 50 | 4225 | 19198 | 8.1 |
| Memorandum Items: Production Indices for Main Economic Sectors (2002 = 100) | | | | | | |
| | 2010/2011 | | 2011/2012 | | | |
| | Jan-Mar | Apr-Jun | Jul-Sep | Oct- Dec | Jan- Mar | Apr- Jun |
| General Index | 162.3 | 172.7 | 168.2 | 169.7 | 188.9 | 181.2 |
| Manufacturing Industries ^{4/} | 128.2 | 170.2 | 140.1 | 146.9 | 155.0 | 155.0 |
| Oil Products | 154.1 | 144.3 | 143.2 | 140.3 | 146.5 | 142.8 |
| Natural Gas | 183.6 | 190.3 | 186.2 | 184.5 | 204.6 | 204.1 |
| Electricity | 166.0 | 183.9 | 182.2 | 178.1 | 191.8 | 212.4 |
| Construction | 191.1 | 166.5 | 206.7 | 195.7 | 226.4 | 170.5 |
| Source: Ministry of Planning and International Cooperation | 83.6 | 75.2 | 66.4 | 76.2 | 85.6 | 75.3 |
| Suez Canal ^{6/} | 275.0 | 276.8 | 264.0 | 251.2 | 282.8 | 270.0 |
| Tourism | 260.1 | 246.2 | 280.3 | 278.8 | 332.5 | 327.5 |

Source: Ministry of Planning and International Cooperation.

* Preliminary, subject to change.

-- Data unavailable.

1/ Excluding change in inventory.

2/ Including Suez Canal.

3/ Including information, sewage services, and replacing and maintenance of assets.

4/ Manufacturing index was revised in June 20120

5/ Excluding Suez Canal.

6/ Based on Suez Canal receipts in US dollars.

REAL SECTOR
INDICATORS