

Section 2

REAL SECTOR INDICATORS

Table (1) Gross Domestic Product at Market Prices (Current Prices).....	11
Table (2) Gross Domestic Product by Sector at Factor Cost (Current Prices).....	12
Table (3) Distribution of Total Investments by Economic Agents and Production.....	13
Indices for Main Economic Sectors	

Table (I) :Gross Domestic Product (at Market Prices) ^{1/}
(In Current Prices)

(LE Billions)

	2005/06	2006/07	2007/08	2008/09	2009/10	2010/11	2011/12 ^{2/}	Jul-Dec 2012/13 *
GDP	617.7	744.8	895.5	1042.2	1206.6	1371.1	1542.3	883.5
	(14.7)	(20.6)	(20.2)	(16.4)	(15.8)	(13.6)	(12.5)	(10.9)
Domestic Demand	632.8	778.9	945.6	1111.4	1269.8	1427.6	1660.3	944.2
Final Consumption	517.1	623.6	745.1	911.4	1034.5	1193.1	1402.2	826.6
Private Consumption	441.2	539.2	647.6	793.1	899.8	1036.1	1223.2	726.5
Public Consumption	75.9	84.4	97.5	118.3	134.7	157.0	179.0	100.1
Investment ^{3/}	115.7	155.3	200.5	200.0	235.3	234.5	258.1	117.6
Net Exports	-15.1	-34.1	-50.1	-69.2	-63.2	-56.5	-118.0	-60.7
Exports of Goods and Services ^{4/}	193.2	225.3	295.9	260.1	257.6	282.0	286.1	153.2
Imports of Goods and Services	208.3	259.4	346.0	329.3	320.8	338.5	404.1	213.9
Memorandum Items: (In Percent of GDP)								
Final Consumption	83.7	83.7	83.2	87.4	85.7	87.0	90.9	93.6
Investment ^{3/}	18.7	20.9	22.4	19.2	19.5	17.1	16.7	13.3
Exports of Goods and Services ^{4/}	31.3	30.2	33.0	25.0	21.3	20.6	18.6	17.3
Imports of Goods and Services	33.7	34.8	38.6	31.6	26.6	24.7	26.2	24.2

Source: Ministry of Planning and International Cooperation

* Preliminary, subject to change. According to the Ministry of Planning, GDP (at market prices) for 2012/2013 is projected to reach LE 1735 billion compared to a revised figure of LE 1542.3 billion in 2011/2012.

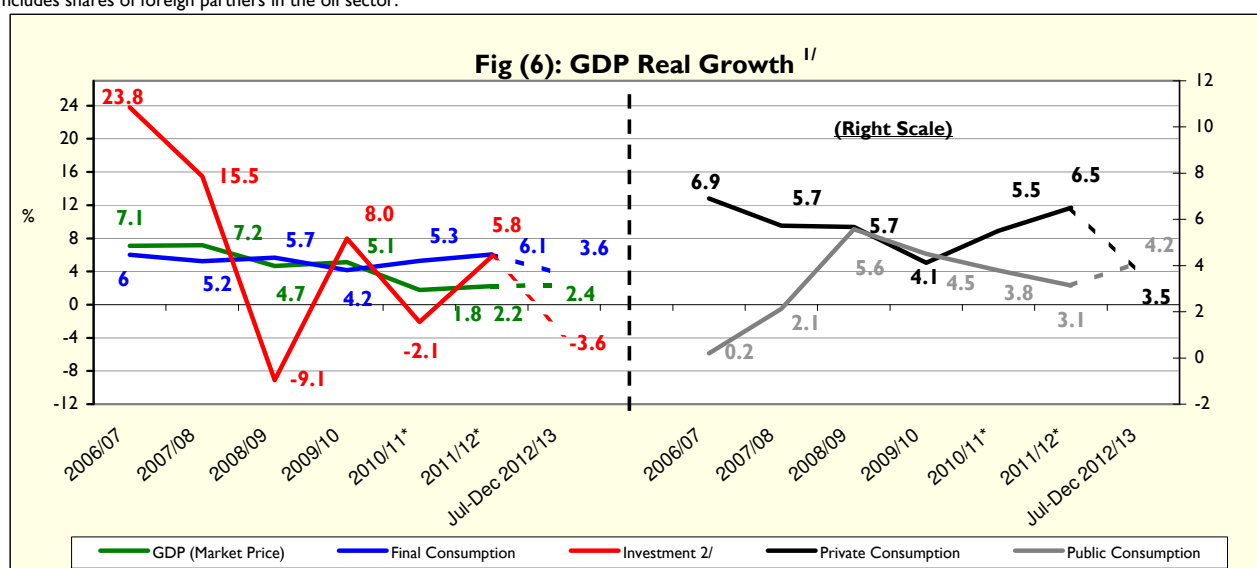
() Percent change over same period in the previous year.

1/ Includes net indirect taxes.

2/ It is noteworthy that the Ministry of Planning is revising GDP data for FY 2011/2012 on a quarterly basis.

3/ Includes fixed capital formation and change in inventory. The change in inventory amounts to LE 3.1 billion during July - December 2012/13, compared to LE 5.1 billion during July - December 2011/12

4/ Includes shares of foreign partners in the oil sector.



Source: Ministry of Planning and International Cooperation

* Preliminary, subject to change.

1/ Using 2001/02 prices for the period 2002/03 - 2006/07, and 2006/07 prices for the period from 2007/08 to 2011/12, and 2011/12 prices for the period beginning 2012/13.

2/ Includes fixed capital formation and change in inventory.

Table (2) : Gross Domestic Product by Sector (at Factor Cost)
(In Current Prices)

(LE Millions)

	2005/06	2006/07	2007/08	2008/09	2009/10	2010/11	2011/12 ^{1/}	Jul-Dec 2012/13 *
GDP	581,144	710,388	855,302	994,055	1,150,590	1,309,906	1,475,326	847,179
	(14.7)	(22.2)	(20.4)	(16.2)	(15.7)	(13.8)	(12.6)	(10.9)
Total Commodity Sector	305,094	360,530	436,727	508,001	591,903	682,156	775,670	455,495
	(17.7)	(18.2)	(21.1)	(16.3)	(16.5)	(15.2)	(13.7)	(11.0)
Agriculture, Forestry and Fishing	81,766	99,953	113,104	135,465	160,970	190,159	218,216	131,349
Extractive Industry	89,834	103,656	133,674	147,966	165,747	195,136	228,384	143,909
Petroleum	40,586	44,059	56,722	61,759	68,538	81,566	96,054	61,138
Natural Gas	48,311	56,590	73,495	82,206	92,538	108,206	126,318	79,473
	(75.3)	(17.1)	(29.9)	(11.9)	(12.6)	(16.9)	(16.7)	(11.3)
Other	937	3,007	3,457	4,001	4,671	5,364	6,012	3,298
Manufacturing Industry	98,693	114,475	139,003	164,523	194,290	216,184	238,369	130,336
Petroleum Refinement	5,601	6,055	7,922	10,257	12,516	14,829	16,923	10,265
Other	93,092	108,420	131,081	154,266	181,774	201,355	221,446	120,071
Electricity	8,880	9,880	11,507	13,043	14,897	16,832	19,080	10,396
Water	2,158	2,390	2,659	2,977	3,390	3,775	4,239	2,390
Construction and Building	23,763	30,175	36,780	44,026	52,609	60,070	67,382	37,115
	(18.2)	(27.0)	(21.9)	(19.7)	(19.5)	(14.2)	(12.2)	(13.8)
Total Production Services	183,567	233,052	279,606	318,566	364,518	404,837	445,903	256,181
	(12.7)	(27.0)	(20.0)	(13.9)	(14.4)	(11.1)	(10.1)	(9.5)
Transport and Warehousing	24,519	29,549	34,790	40,962	47,400	53,351	60,513	33,091
Telecommunications	11,974	23,062	27,151	31,185	34,818	37,301	38,670	20,586
Suez Canal	23,399	24,084	28,729	26,826	25,803	29,311	31,203	15,608
	(16.1)	(2.9)	(19.3)	-(6.6)	-(3.8)	(13.6)	(6.5)	-(2.5)
Wholesale and Retail Trade	63,583	77,675	93,382	113,398	133,774	150,658	166,330	101,092
Financial Intermediation	28,798	27,531	31,756	36,125	41,174	44,834	49,741	28,804
Insurance and Social Insurance	12,497	26,372	31,375	35,689	41,521	47,627	53,663	29,037
Tourism (Hotels and Restaurants)	18,798	24,778	32,424	34,382	40,028	41,755	45,783	27,963
	(12.5)	(31.8)	(30.9)	(6.0)	(16.4)	(4.3)	(9.6)	(14.6)
Total Social Services	92,483	116,806	138,970	167,488	194,170	222,912	253,753	135,503
	(9.5)	(26.3)	(19.0)	(20.5)	(15.9)	(14.8)	(13.8)	(13.3)
Real Estate	19,055	20,943	23,334	26,575	30,262	34,066	38,035	19,929
General Government	56,930	64,220	79,737	98,575	114,944	133,688	153,984	81,301
Education	3,496	8,376	9,492	11,133	12,828	14,558	16,229	8,860
Health	6,563	9,908	10,961	12,971	14,797	16,595	18,560	10,626
Other Services ^{2/}	6,439	13,359	15,446	18,234	21,339	24,005	26,945	14,787

Source: Ministry of Planning and International Cooperation.

() Percent change over same period in the previous year.

* Preliminary, subject to change.

1/ It is noteworthy that the Ministry of Planning is revising GDP data for FY 2011/2012 on a quarterly basis.

2/ Includes sewage sector, and the information sector.

Table (3) : Distribution of Total Investments by Economic Agents
(July - December 2012/2013 *)^{1/}

	(LE Millions)					
	Government	Economic Authorities	Public Business Sector	Private Business Sector	Total	% to Total Investments
Total Investments	15034	7910	9850	81558	114351	100
Commodity Sector	3215	471	8214	39107	51007	44.6
Agriculture, Irrigation & Fishing	1116	12	0.1	2557	3685	3.2
Crude Oil, Mining & Natural Gas	-	4	753	22900	23656	20.7
Manufacturing Industries & Petroleum Products	41	3	1724	12500	14269	12.5
Electricity & Water	2026	452	5375	-	7853	6.9
Construction & Building	32	-	362	1150	1544	1.4
Production Services	3677	1531	1614	19031	25853	22.6
Transportation & Communication ^{2/}	3584	1492	1065	12131	18272	16.0
Wholesale & Retail Trade	-	31	92	3600	3723	3.3
Financial Services, Insurance and Social solidarity	90	1	307	-	397	0.3
Tourism	2.8	7	150	3300	3460	3.0
Social Services	8141	5908	22	23420	37491	32.8
Housing and Real Estate Activities	59	299	-	18200	18558	16.2
Educational Services	1761	36	-	1300	3097	2.7
Health Services	994	25	-	1100	2118	1.9
Other Services ^{3/}	5328	5549	22	2820	13719	12.0

**REAL SECTOR
INDICATORS**

Memorandum Items: Production Indices for Main Economic Sectors (2002 = 100)						
	2011/2012				2012/2013	
	Jul-Sep	Oct- Dec	Jan- Mar	Apr- Jun	Jul- Sep	Oct- Dec
General Index	168.2	169.7	188.9	181.2	164.1	172.2
Manufacturing Industries ^{4/}	140.1	146.9	155.0	155.0	131.9	133.1
Oil Products	143.2	140.3	146.5	142.8	149.4	153.1
Natural Gas	186.2	184.5	204.6	204.1	195.3	185.2
Electricity	182.2	178.1	191.8	212.4	196.2	187.6
Construction	206.7	195.7	226.4	170.5	191.7	193.5
Transportation ^{5/}	66.4	76.2	85.6	75.3	63.2	64.2
Suez Canal ^{6/}	264.0	251.2	282.8	270.0	255.4	241.4
Tourism	280.3	278.8	332.5	327.5	278.2	333.0

Source: Ministry of Planning and International Cooperation.

* Preliminary, subject to change.

-- Data unavailable.

1/ Excluding change in inventory.

2/ Including Suez Canal.

3/ Including information, sewage services, and replacing and maintenance of assets.

4/ Manufacturing index was revised in June 2012

5/ Excluding Suez Canal.

6/ Based on Suez Canal receipts in US dollars.