

Section 2

REAL SECTOR INDICATORS

Table (1) Gross Domestic Product at Market Prices (Current Prices).....	11
Table (2) Gross Domestic Product by Sector at Factor Cost (Current Prices).....	12
Table (3) Distribution of Total Investments by Economic Agents and Production.....	13
Indices for Main Economic Sectors	

Table (I) :Gross Domestic Product (at Market Prices) ^{1/}
(In Current Prices)

(LE Billions)

	2005/06	2006/07	2007/08	2008/09	2009/10	2010/11	2011/12 ^{2/}	Jul-Mar 2012/13 [*]
GDP	617.7	744.8	895.5	1042.2	1206.6	1371.1	1542.3	1307.1
	(14.7)	(20.6)	(20.2)	(16.4)	(15.8)	(13.6)	(12.5)	(11.2)
Domestic Demand	632.8	778.9	945.6	1111.4	1269.8	1427.6	1660.3	1394.2
Final Consumption	517.1	623.6	745.1	911.4	1034.5	1193.1	1402.2	1214.1
Private Consumption	441.2	539.2	647.6	793.1	899.8	1036.1	1223.2	1068.0
Public Consumption	75.9	84.4	97.5	118.3	134.7	157.0	179.0	146.1
Investment ^{3/}	115.7	155.3	200.5	200.0	235.3	234.5	258.1	180.1
Net Exports	-15.1	-34.1	-50.1	-69.2	-63.2	-56.5	-118.0	-87.1
Exports of Goods and Services ^{4/}	193.2	225.3	295.9	260.1	257.6	282.0	286.1	232.3
Imports of Goods and Services	208.3	259.4	346.0	329.3	320.8	338.5	404.1	319.4
Memorandum Items: (In Percent of GDP)								
Final Consumption	83.7	83.7	83.2	87.4	85.7	87.0	90.9	92.9
Investment ^{3/}	18.7	20.9	22.4	19.2	19.5	17.1	16.7	13.8
Exports of Goods and Services ^{4/}	31.3	30.2	33.0	25.0	21.3	20.6	18.6	17.8
Imports of Goods and Services	33.7	34.8	38.6	31.6	26.6	24.7	26.2	24.4

REAL SECTOR
INDICATORS

Source: Ministry of Planning and International Cooperation

* Preliminary, subject to change. According to the Ministry of Planning, GDP (at market prices) for 2012/2013 is projected to reach LE 1735 billion compared to a revised figure of LE 1542.3 billion in 2011/2012.

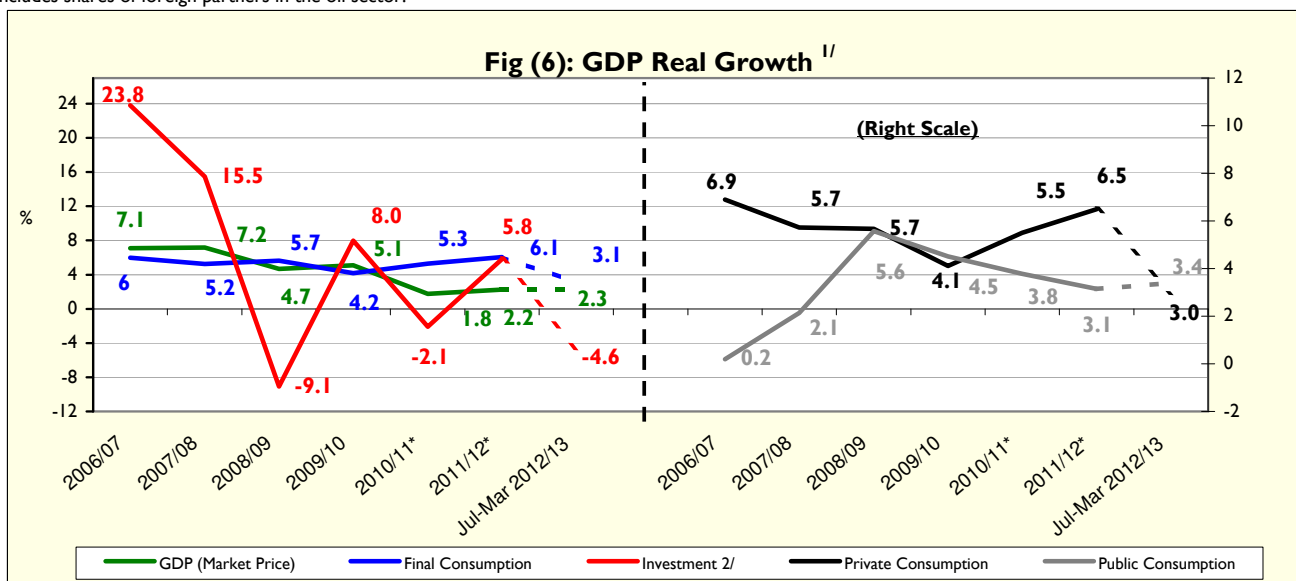
() Percent change over same period in the previous year.

1/ Includes net indirect taxes.

2/ It is noteworthy that the Ministry of Planning is revising GDP data for FY 2011/2012 on a quarterly basis.

3/ Includes fixed capital formation and change in inventory. The change in inventory amounts to LE 3.2 billion during July - March 2012/13, compared to LE 7.7 billion during July - March 2011/12

4/ Includes shares of foreign partners in the oil sector.



Source: Ministry of Planning and International Cooperation

* Preliminary, subject to change.

1/ Using 2001/02 prices for the period 2002/03 - 2006/07, and 2006/07 prices for the period from 2007/08 to 2011/12, and 2011/12 prices for the period beginning 2012/13.

2/ Includes fixed capital formation and change in inventory.

Table (2) : Gross Domestic Product by Sector (at Factor Cost)
(In Current Prices)

(LE Millions)

	2005/06	2006/07	2007/08	2008/09	2009/10	2010/11	2011/12 ^{1/}	Jul-Mar 2012/13 *
GDP	581,144	710,388	855,302	994,055	1,150,590	1,309,906	1,475,326	1,252,855
	(14.7)	(22.2)	(20.4)	(16.2)	(15.7)	(13.8)	(12.6)	(11.1)
Total Commodity Sector	305,094	360,530	436,727	508,001	591,903	682,156	775,670	674,106
	(17.7)	(18.2)	(21.1)	(16.3)	(16.5)	(15.2)	(13.7)	(11.1)
Agriculture, Forestry and Fishing	81,766	99,953	113,104	135,465	160,970	190,159	218,216	187,735
Extractive Industry	89,834	103,656	133,674	147,966	165,747	195,136	228,384	218,410
Petroleum	40,586	44,059	56,722	61,759	68,538	81,566	96,054	93,825
Natural Gas	48,311	56,590	73,495	82,206	92,538	108,206	126,318	119,689
	(75.3)	(17.1)	(29.9)	(11.9)	(12.6)	(16.9)	(16.7)	(10.2)
Other	937	3,007	3,457	4,001	4,671	5,364	6,012	4,896
Manufacturing Industry	98,693	114,475	139,003	164,523	194,290	216,184	238,369	193,763
Petroleum Refinement	5,601	6,055	7,922	10,257	12,516	14,829	16,923	14,642
Other	93,092	108,420	131,081	154,266	181,774	201,355	221,446	179,121
Electricity	8,880	9,880	11,507	13,043	14,897	16,832	19,080	15,826
Water	2,158	2,390	2,659	2,977	3,390	3,775	4,239	3,533
Construction and Building	23,763	30,175	36,780	44,026	52,609	60,070	67,382	54,839
	(18.2)	(27.0)	(21.9)	(19.7)	(19.5)	(14.2)	(12.2)	(14.6)
Total Production Services	183,567	233,052	279,606	318,566	364,518	404,837	445,903	371,515
	(12.7)	(27.0)	(20.0)	(13.9)	(14.4)	(11.1)	(10.1)	(10.2)
Transport and Warehousing	24,519	29,549	34,790	40,962	47,400	53,351	60,513	47,202
Telecommunications	11,974	23,062	27,151	31,185	34,818	37,301	38,670	30,424
Suez Canal	23,399	24,084	28,729	26,826	25,803	29,311	31,203	23,309
	(16.1)	(2.9)	(19.3)	-(6.6)	-(3.8)	(13.6)	(6.5)	(1.0)
Wholesale and Retail Trade	63,583	77,675	93,382	113,398	133,774	150,658	166,330	141,437
Financial Intermediation	28,798	27,531	31,756	36,125	41,174	44,834	49,741	43,356
Insurance and Social Insurance	12,497	26,372	31,375	35,689	41,521	47,627	53,663	44,451
Tourism (Hotels and Restaurants)	18,798	24,778	32,424	34,382	40,028	41,755	45,783	41,336
	(12.5)	(31.8)	(30.9)	(6.0)	(16.4)	(4.3)	(9.6)	(17.5)
Total Social Services	92,483	116,806	138,970	167,488	194,170	222,912	253,753	207,234
	(9.5)	(26.3)	(19.0)	(20.5)	(15.9)	(14.8)	(13.8)	(13.1)
Real Estate	19,055	20,943	23,334	26,575	30,262	34,066	38,035	30,684
General Government	56,930	64,220	79,737	98,575	114,944	133,688	153,984	125,532
Education	3,496	8,376	9,492	11,133	12,828	14,558	16,229	13,409
Health	6,563	9,908	10,961	12,971	14,797	16,595	18,560	15,549
Other Services ^{2/}	6,439	13,359	15,446	18,234	21,339	24,005	26,945	22,060

Source: Ministry of Planning and International Cooperation.

() Percent change over same period in the previous year.

* Preliminary, subject to change.

1/ It is noteworthy that the Ministry of Planning is revising GDP data for FY 2011/2012 on a quarterly basis.

2/ Includes sewage sector, and the information sector.

**Table (3) : Distribution of Total Investments by Economic Agents
(July - March 2012/2013 *)^{1/}**

(LE Millions)

	Government	Economic Authorities	Public Business Sector	Private Business Sector	Total	% to Total Investments
Total Investments	23481	9685	16942	126792	176900	100
Commodity Sector	5337	869	14144	57613	77962	44.1
Agriculture, Irrigation & Fishing	1818	24	0.2	3963	5805	3.3
Crude Oil, Mining & Natural Gas	-	6	1179	33400	34586	19.6
Manufacturing Industries & Petroleum Products	79	9	2695	18500	21284	12.0
Electricity & Water	3395	829	9637	-	13861	7.8
Construction & Building	45	-	632	1750	2428	1.4
Production Services	6436	2566	2763	30059	41824	23.6
Transportation & Communication ^{2/}	6304	2498	1687	19159	29647	16.8
Wholesale & Retail Trade	-	56	221	5600	5877	3.3
Financial Services, Insurance and Social solidarity	128	1	605	-	734	0.4
Tourism	4.3	11	250	5300	5565	3.1
Social Services	11708	6251	36	39120	57114	32.3
Housing and Real Estate Activities	107	299	-	30200	30606	17.3
Educational Services	2572	47	-	2100	4719	2.7
Health Services	1288	57	-	1800	3145	1.8
Other Services ^{3/}	7741	5848	36	5020	18645	10.5

Memorandum Items: Production Indices for Main Economic Sectors (2002 = 100)

	2011/2012			2012/2013		
	Oct- Dec	Jan- Mar	Apr- Jun	Jul- Sep	Oct- Dec	Jan- Mar
General Index	169.7	188.9	181.2	164.1	172.2	195.9
Manufacturing Industries ^{4/}	146.9	155.0	155.0	131.9	133.1	157.3
Oil Products	140.3	146.5	142.8	149.4	153.1	153.1
Natural Gas	184.5	204.6	204.1	195.3	185.2	196.7
Electricity	178.1	191.8	212.4	196.2	187.6	195.3
Construction	195.7	226.4	170.5	191.7	193.5	188.1
Transportation ^{5/}	76.2	85.6	75.3	63.2	64.2	70.3
Suez Canal ^{6/}	251.2	282.8	270.0	255.4	241.4	267.9
Tourism	278.8	332.5	327.5	278.2	333.0	411.2

Source: Ministry of Planning and International Cooperation.

* Preliminary, subject to change.

-- Data unavailable.

1/ Excluding change in inventory.

2/ Including Suez Canal.

3/ Including information, sewage services, and replacing and maintenance of assets.

4/ Manufacturing and construction index was revised during the period from September 2012 till March 2013.

5/ Excluding Suez Canal.

6/ Based on Suez Canal receipts in US dollars.

REAL SECTOR INDICATORS