

Section 3

DOMESTIC PRICES

Table (4) Annual Inflation In Domestic Price Indices-----	17
Table (5) Inflation in Consumer Prices (Percent Change)-----	18
Table (6) Inflation in Producer Prices According to Economic Activity Classification-----	19
Table (7) Inflation in Producer Prices According to End use Classification-----	20
Table (8) Inflation in Producer Prices According to Stage of Processing Classification-----	20
Table (9) Exchange Rates-----	21

Table (4): Annual Inflation In Domestic Price Indices 1/ 2/ 3/

Summary Profile
2010 - 2013

	2010				2011				2012				2013			
	CPI			PPI	CPI			PPI	CPI			PPI	CPI			PPI
	Urban	Overall Egypt	Core		Urban	Overall Egypt	Core		Urban	Overall Egypt	Core		Urban	Overall Egypt	Core	
January	13.6	13.6	7.4	12.9	10.8	11.0	9.7	14.7	8.6	9.2	6.9	7.4	6.3	6.6	5.2	-0.5
February	12.6	12.5	6.9	13.1	10.7	10.8	9.5	16.8	9.2	9.9	7.3	8.8	8.2	8.7	7.7	-0.8
March	11.9	11.7	7.0	13.7	11.5	11.8	8.5	20.4	9.0	9.5	8.7	5.4	7.6	8.2	7.0	-3.0
April	10.8	10.8	6.6	15.9	12.1	12.4	8.8	20.6	8.8	9.3	8.4	2.9	8.1	8.8	7.5	-1.7
May	10.0	9.8	6.7	9.9	11.9	12.2	8.8	20.1	8.3	8.6	7.2	2.8	8.2	9.0	8.0	-0.4
June	10.1	10.0	6.7	8.6	11.8	12.1	8.9	19.4	7.3	7.4	7.0	-3.7	9.8	10.9	8.6	8.4
July	10.4	10.4	7.1	10.3	10.4	10.7	8.7	17.3	6.4	6.3	6.3	-2.1	10.3	11.5	9.1	8.9 ^{4/}
August	10.9	11.5	8.2	10.3	8.5	8.8	7.0	14.0	6.5	6.3	5.3	2.3				
September	11.0	11.7	7.6	14.1	8.2	8.5	7.9	11.8	6.2	6.3	3.8	4.5				
October	11.0	11.4	8.1	16.9	7.1	7.5	7.6	6.0	6.7	7.0	4.6	4.0				
November	10.2	10.2	8.9	13.5	9.1	10.4	7.0	9.1	4.3	4.1	4.2	-1.6				
December	10.3	10.3	9.7	12.8	9.6	10.4	7.1	9.2	4.7	4.7	4.4	-0.4				

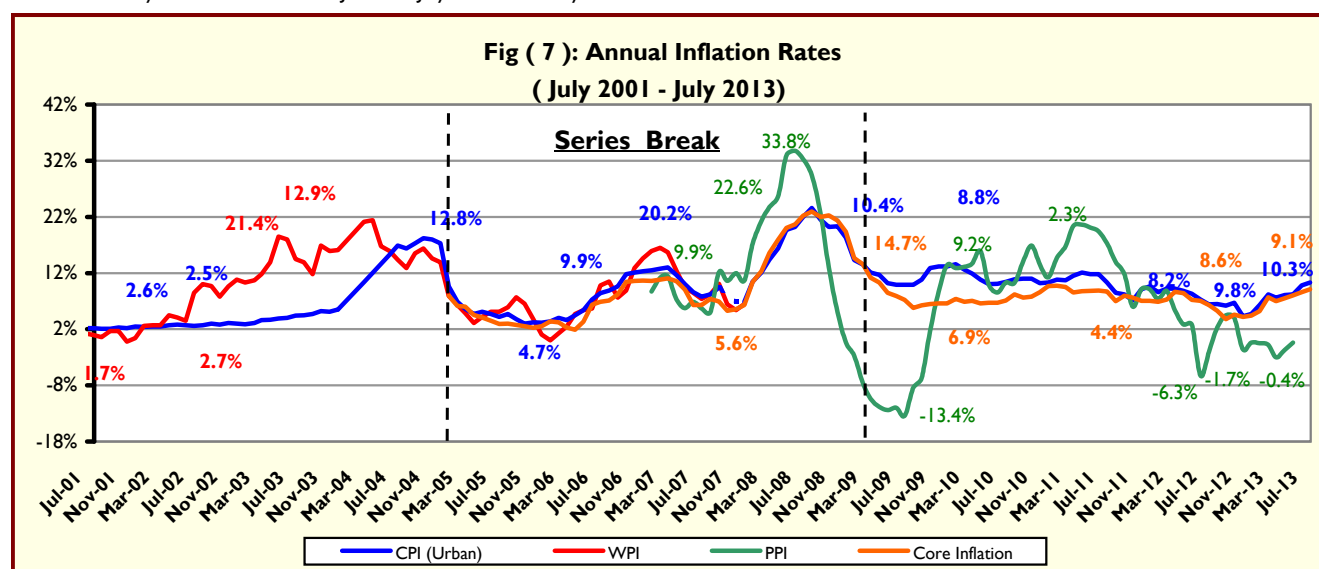
Source: CAPMAS.

1/ Starting August 2009, CPI Urban data is based on the weights derived from 2008/2009 income and expenditure survey, and using January 2010 as a base month. Prior to this date, the basket and weights were derived from 2004/2005 income and expenditure survey taking January 2007 as a base month.

2/ The new series of Producer Price Index was issued by CAPMAS starting September 2007, using 2004/2005 prices of goods and services as a base period, and deriving sub-group weights from average values of agricultural, industrial and services production for the years 2002/2003 and 2003/2004. It is worth mentioning that Producer Price Index series before September 2007 are not available so far.

3/The Central Bank of Egypt launched "Core Inflation Index" derived from the CAPMAS headline CPI, however it excludes items characterized by inherent price volatility and those with managed prices, specifically 'fruits and vegetables' (6.9 percent of headline CPI basket) as well as 'regulated items' (18.7 percent of headline CPI basket).

4/ It is noteworthy that detailed data for June and July 2013 are not yet available .



Source: CAPMAS.

Table (5): Inflation in Consumer Prices ^{1/}
(Percent Change)

	Year on Year Quarterly 2/				Year on Year Monthly 3/				
	Apr-Jun 2012	Oct-Dec 2012	Jan- Mar 2013	Apr-Jun 2013	Jul-12	Apr-13	May-13	Jun-13	Jul-13
CPI Inflation	8.1	5.2	7.4	8.7	6.4	8.1	8.2	9.8	10.3
Food & Beverages	10.3	6.7	8.7	10.2	8.1	9.0	9.0	12.7	13.9
Tobacco	28.5	2.8	7.7	7.7	8.8	7.7	7.7	7.7	7.7
Clothing & Footwear	5.4	2.3	2.7	5.8	4.4	5.7	5.8	5.8	5.8
Housing, Water, Electricity and Fuel	7.8	3.7	4.5	5.5	6.7	5.4	6.1	5.0	5.5
Furniture and Equipment and Maintenance	8.0	5.1	7.0	7.3	7.4	8.5	6.4	6.7	7.2
Medical Care	0.1	3.2	9.8	12.5	1.7	12.5	12.5	12.5	10.7
Transportation Expenditures	2.8	2.4	3.0	2.4	2.4	2.0	2.4	2.6	2.6
Communication	-4.5	0.7	0.7	0.0	-4.4	-0.1	-0.1	-0.1	-0.1
Entertainment	8.5	6.3	8.6	7.7	9.4	7.8	7.9	7.6	9.1
Education	9.9	11.4	11.4	11.4	9.9	11.4	11.4	11.4	11.4
Hotels and Restaurants	3.6	4.3	15.0	20.2	3.5	19.0	20.0	21.7	21.0
Miscellaneous	1.8	0.9	0.7	1.1	1.1	1.4	1.3	0.8	0.4

Source: CAPMAS.

1/ In urban areas.

2/ Change in index over the same quarter in the previous year . Starting the period July-September 2010, data are based on new CPI series recently published by CAPMAS which use January 2010 as a base month and assume new weights for sub-groups in accordance with 2008/2009 income expenditure survey.

3/ Change in index over the same month in the previous year . Starting January 2009, data are based on new CPI series recently published by CAPMAS.

Table (6): Inflation in Producer Prices According to Economic Activity Classification "

(Percent Change)

	Year on Year Quarterly 2/				Year on Year Monthly 3/ 4/				
	Jan-Mar	July-Sep	Oct-Dec	Jan- Mar	May-12	Feb-13	Mar-13	Apr-13	May-13
	2012	2012	2012	2013					
Overall PPI Inflation	7.2	1.6	0.7	-1.4	2.8	-0.8	-3.0	-1.7	-0.4
Agriculture, Forestry and Fishing	9.2	2.6	-4.5	-4.4	4.3	-4.3	-3.8	-3.0	-4.4
Crop and animal production, hunting, and related service activities	9.0	2.0	-5.2	-5.0	3.5	-5.0	-4.1	-3.0	-4.6
Fishing and Aquaculture	11.6	10.5	5.1	3.5	17.0	4.0	0.9	-3.1	-1.8
Mining and Quarrying	12.9	0.2	2.7	-5.1	0.4	-3.4	-12.4	-12.4	-5.3
Extraction of crude petroleum and natural gas	12.8	-0.4	2.2	-5.7	-0.3	-3.9	-13.0	-12.7	-5.5
Other mining and quarrying	24.5	61.6	59.2	52.6	81.5	52.7	53.1	3.9	3.9
Manufacturing	3.4	0.5	0.9	2.7	2.8	3.2	3.0	5.9	6.1
Food products	2.8	1.8	2.1	1.9	4.4	1.9	1.9	4.2	4.2
Beverages	4.2	0.3	0.1	0.0	4.0	0.0	0.0	0.0	0.0
Tobacco products	8.3	8.2	8.2	4.5	12.8	4.5	4.5	1.5	1.5
Textiles	20.2	14.8	3.2	4.7	15.2	4.7	4.7	4.5	4.5
Wearing apparel	2.9	0.0	0.0	0.0	0.0	0.0	0.0	0.5	0.5
Leather and related products	0.6	0.0	0.0	0.0	0.6	0.0	0.0	0.0	0.0
Wood and wood products	7.5	6.5	2.3	1.5	10.5	1.8	0.9	13.7	15.6
Paper and paper products	3.5	6.3	4.5	4.5	1.7	4.5	4.5	4.6	4.6
Printing and reproduction of recorded media	0.0	0.0	0.0	0.0	0.0	0.0	0.0	0.0	0.0
Coke and refined petroleum	4.8	0.6	1.5	1.8	5.3	1.9	1.7	2.1	2.1
Chemicals and chemical products	5.1	6.0	6.7	6.7	1.4	6.6	6.9	10.8	10.8
Pharmaceuticals, medicinal, chemical and botanical products	0.0	0.0	0.0	0.4	0.0	0.4	0.4	0.8	0.8
Rubber and plastic products	-6.0	3.9	1.4	6.7	1.2	6.7	6.7	11.3	11.3
Other non-metallic mineral products	-3.6	-2.4	5.5	7.6	-2.2	6.1	13.9	13.0	12.7
Basic Metals	-0.2	-9.6	-7.9	2.5	-3.2	6.5	2.6	9.3	9.7
Fabricated Metal products, except machinery and equipment	1.0	-2.8	-0.6	0.8	-3.0	0.7	0.4	46.0	47.0
Computer, electronic and optical products	3.2	-10.2	-11.8	-11.8	3.0	-11.8	-11.8	-12.8	-12.8
Electrical equipment	11.3	2.5	1.9	3.3	2.1	3.3	3.3	5.4	5.4
Machinery and Equipment, n.o.i	0.8	0.0	0.0	0.0	0.0	0.0	0.0	5.7	5.7
Motor vehicles, trailers and semi-trailers	4.5	3.5	0.7	0.7	2.9	0.7	0.7	0.7	0.7
Other transport Equipment	0.0	0.0	0.0	0.0	0.0	0.0	0.0	0.0	0.0
Furniture	0.4	0.2	0.0	0.1	0.4	0.1	0.1	0.3	0.3
Other manufacturing	20.8	2.6	4.5	6.2	5.2	6.0	5.2	-4.9	9.0
Electricity, steam, gas and air conditioning supply	0.0	7.3	8.2	10.6	0.0	10.6	10.6	10.6	10.6
Water supply, sewerage, waste management, and remediation activities	7.3	2.3	0.0	0.0	7.3	0.0	0.0	0.0	0.0
Water collection, treatment and supply	0.0	0.0	0.0	0.0	0.0	0.0	0.0	0.0	0.0
Waste collection, treatment and disposal activities	13.6	4.2	0.0	0.0	13.6	0.0	0.0	0.0	0.0
Transportation and storage	3.0	0.0	0.0	0.0	3.0	0.0	0.0	0.0	0.0
Land transport and trasport via Pipelines	0.0	0.0	0.0	0.0	0.0	0.0	0.0	0.0	0.0
Water transport	0.0	0.0	0.0	0.0	0.0	0.0	0.0	0.0	0.0
Air Transport	3.5	0.0	0.0	0.0	3.5	0.0	0.0	0.0	0.0
Postal and courier activities	0.0	0.0	0.0	0.0	0.0	0.0	0.0	0.0	0.0
Accommodation and Food Service Activities	-3.6	10.1	34.8	5.8	3.3	5.8	5.8	6.0	6.0
Accommodation	-7.1	12.0	50.8	1.4	3.3	1.4	1.4	2.0	2.0
Food and beverage service activities	2.7	6.9	7.9	13.2	3.3	13.2	13.2	12.5	12.5
Information and communications	0.0	0.0	0.0	0.0	0.0	0.0	0.0	0.0	0.0

Source: CAPMAS.

1/ The new series of Producer Price Index was issued by CAPMAS starting September 2007, using 2004/2005 prices of goods and services as a base period, and deriving sub-group weights from average values of agricultural, industrial and services production for the years 2002/2003 and 2003/2004.

2/ Change in index over the same quarter in the previous year.

3/ Change in index over the same month in the previous year .

4/ It is noteworthy that detailed data for June and July 2013 are not yet available .

Table (7): Inflation in Producer Prices According to End Use Classification ^{1/}

	Year on Year Quarterly 2/				Year on Year Monthly 3/ 4/				
	Jan-Mar 2012	July-Sep 2012	Oct-Dec 2012	Jan- Mar 2013	May-12	Feb-13	Mar-13	Apr-13	May-13
Overall PPI Index	7.2	1.6	0.7	-1.4	2.8	-0.8	-3.0	-1.7	-0.4
Fuel	4.8	0.6	1.5	1.8	5.3	1.9	1.7	2.1	2.1
Raw Materials	15.4	-1.8	1.8	-4.8	1.6	-3.6	-10.6	-10.0	-3.3
Intermediate Goods	0.4	-2.6	-0.9	3.4	-1.4	4.5	4.2	9.4	9.7
Non-Durable Consumer Goods	6.9	5.0	-2.7	-3.2	4.9	-2.9	-3.2	-2.6	-4.0
Durable Consumer Goods	6.5	-0.7	2.5	3.1	2.1	3.1	3.1	5.1	5.1
Capital Goods	4.5	0.6	0.1	0.7	2.5	1.0	1.0	1.5	1.5

Table (8): Inflation in Producer Prices According to Stage of Processing Classification ^{1/}

	Year on Year Quarterly 2/				Year on Year Monthly 3/				
	Jan-Mar 2012	July-Sep 2012	Oct-Dec 2012	Jan- Mar 2013	May-12	Feb-13	Mar-13	Apr-13	May-13
Overall PPI Index	7.2	1.6	0.7	-1.4	2.8	-0.8	-3.0	-1.7	-0.4
Fuel	12.9	-0.2	2.4	-4.7	1.0	-3.1	-11.5	-11.0	-4.4
Cotton	-20.7	-20.7	-2.2	-2.2	-20.7	-2.2	-2.2	-2.2	-2.2
Raw Materials	10.1	3.4	-4.0	-3.9	5.3	-3.8	-3.2	-2.7	-4.1
Semi-Finished Goods	1.2	0.1	1.6	1.8	1.7	1.8	1.8	3.0	3.2
Finished Goods	3.6	0.6	-0.1	2.5	2.4	3.3	3.0	6.9	7.0

Source: CAPMAS.

1/ The new series of Producer Price Index was issued by CAPMAS starting September 2007, using 2004/2005 prices of goods and services as a base period, and deriving sub-group weights from average values of agricultural, industrial and services production for the years 2002/2003 and 2003/2004.

2/ Change in index over the same quarter in the previous year.

3/ Change in index over the same month in the previous year.

4/ It is noteworthy that detailed data for June and July 2013 are not yet available.

Table (9) : Exchange Rates

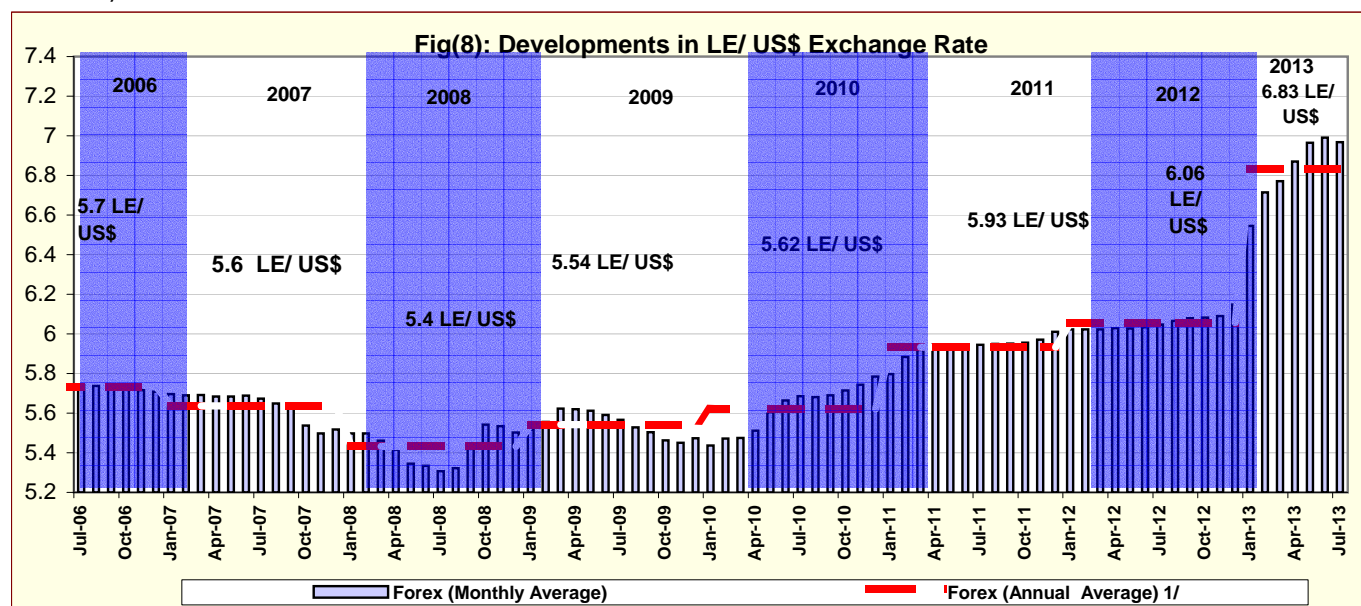
	Domestic Market			International Markets	
	(LE / currency units) ^{1/}			(US \$ / currency units)	
	US Dollar	Pound Sterling	Euro	Euro	Pound Sterling
Yearly Averages ^{2/}					
2003	5.861	9.595	6.654	1.132	1.636
2004	6.194	11.348	7.701	1.244	1.833
2005	5.779	10.569	7.226	1.246	1.821
2006	5.733	10.648	7.255	1.256	1.843
2007	5.636	11.448	7.836	1.370	2.002
2008	5.431	10.186	8.078	1.471	1.855
2009	5.542	8.764	7.804	1.394	1.565
2010	5.622	8.783	7.541	1.329	1.546
2011	5.933	9.535	8.277	1.393	1.604
2012	6.056	9.614	7.801	1.286	1.585
Monthly Averages					
Jan-12	6.023	9.357	7.782	1.290	1.551
Feb-12	6.023	9.532	7.978	1.322	1.580
Mar-12	6.022	9.546	7.972	1.321	1.582
Apr-12	6.029	9.624	7.922	1.317	1.600
May-12	6.028	9.641	7.761	1.284	1.595
Jun-12	6.033	9.385	7.569	1.254	1.554
Jul-12	6.047	9.460	7.464	1.231	1.560
Aug-12	6.066	9.546	7.527	1.239	1.571
Sep-12	6.079	9.805	7.832	1.286	1.609
Oct-12	6.085	9.810	7.913	1.297	1.608
Nov-12	6.090	9.744	7.829	1.283	1.597
Dec-12	6.147	9.922	8.064	1.311	1.613
Jan-13	6.546	10.452	8.683	1.328	1.599
Feb-13	6.714	10.439	8.998	1.338	1.553
Mar-13	6.771	10.223	8.792	1.298	1.509
Apr-13	6.870	10.520	8.946	1.301	1.530
May-13	6.964	10.663	9.044	1.298	1.531
Jun-13	6.991	10.825	9.223	1.318	1.547
Jul-13	6.968	10.638	9.164	1.308	1.518

DOMESTIC PRICES

Sources: Central Bank of Egypt, Reuters and Oanda (www.oanda.com).

1/ Average of the Bid / Ask rates. (Mid Point)

2/ Calendar year.



Source: Central Bank of Egypt and Reuters.

1/ Calendar year average.