

# Section 2

## REAL SECTOR INDICATORS

Table (1) Gross Domestic Product at Market Prices (Current Prices).....	11
Table (2) Gross Domestic Product by Sector at Factor Cost (Current Prices).....	12
Table (3) Distribution of Total Investments by Economic Agents and Production.....	13
Indices for Main Economic Sectors	

**Table ( I ) :Gross Domestic Product (at Market Prices) <sup>1/</sup>**  
**(In Current Prices)**  
**(LE Billions)**

	2008/09	2009/10	2010/11	2011/12	2012/13	2013/ <sup>2/</sup> 14	Jul-Dec 2013/14 <sup>#</sup>	Jul-Dec 2014/15 <sup>*</sup>
<b>GDP</b>	<b>1042.2</b>	<b>1206.6</b>	<b>1371.1</b>	<b>1575.5</b>	<b>1753.3</b>	<b>1997.6</b>	<b>1017.3</b>	<b>1171.4</b>
	(16.4)	(15.8)	(13.6)	(14.9)	(11.3)	(13.9)	(15.1)	(15.1)
<b>Domestic Demand</b>	<b>1111.4</b>	<b>1269.8</b>	<b>1427.6</b>	<b>1708.1</b>	<b>1871.2</b>	<b>2174.7</b>	<b>1100.0</b>	<b>1263.9</b>
Final Consumption	911.4	1034.5	1193.1	1450.0	1622.6	1894.1	977.2	1116.3
Private Consumption	793.1	899.8	1036.1	1271.0	1417.8	1654.1	860.3	982.1
Public Consumption	118.3	134.7	157.0	179.0	204.8	240.0	116.9	134.2
Investment <sup>3/</sup>	200.0	235.3	234.5	258.1	248.6	280.6	122.8	147.6
<b>Net Exports</b>	<b>-69.2</b>	<b>-63.2</b>	<b>-56.5</b>	<b>-132.6</b>	<b>-117.9</b>	<b>-177.1</b>	<b>-82.7</b>	<b>-92.5</b>
Exports of Goods and Services <sup>4/</sup>	260.1	257.6	282.0	274.6	316.6	303.4	145.7	175.6
Imports of Goods and Services	329.3	320.8	338.5	407.2	434.5	480.5	228.4	268.1
<b>Memorandum Items: (In Percent of GDP)</b>								
Final Consumption	87.4	85.7	87.0	92.0	92.5	94.8	96.1	95.3
Investment <sup>3/</sup>	19.2	19.5	17.1	16.4	14.2	14.0	12.1	12.6
Exports of Goods and Services <sup>4/</sup>	25.0	21.3	20.6	17.4	18.1	15.2	14.3	15.0
Imports of Goods and Services	31.6	26.6	24.7	25.8	24.8	24.1	22.5	22.9

Source: Ministry of Planning.

\* Preliminary, subject to change. According to the Ministry of Planning, GDP (at market prices) for 2013/2014 was revised to reach LE 1997.6 billion compared to LE 1753 billion in 2012/2013. It is also worthy to note that GDP estimates for 2014/2015 have been revised to LE 2321.1 billion in light of 2013/2014 actuals.

# Revised

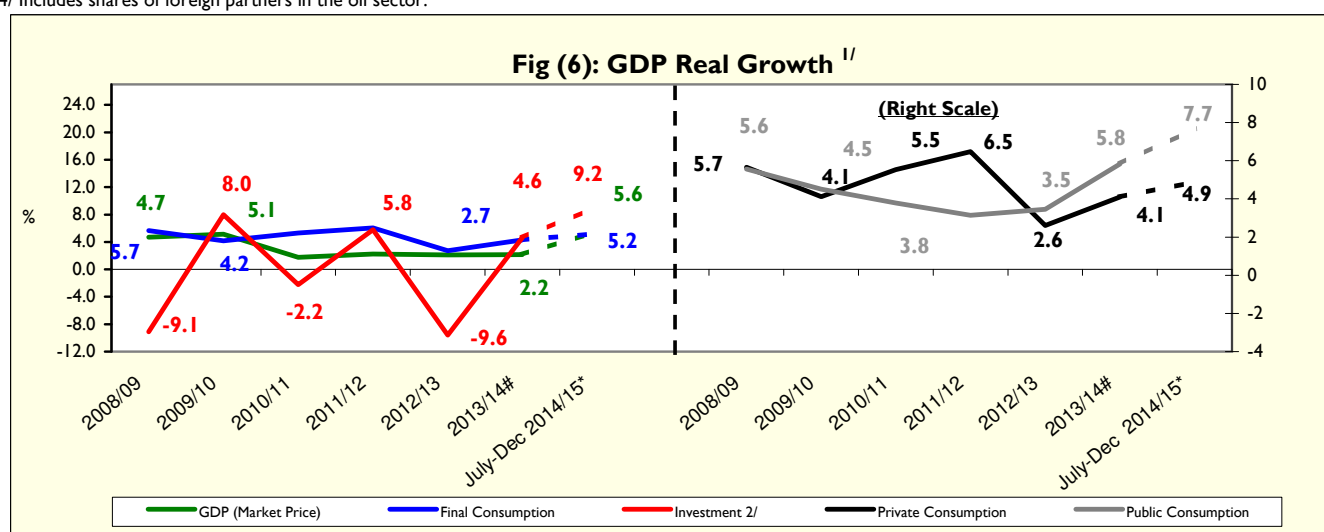
( ) Percent change over same period in the previous year.

1/ Includes net indirect taxes.

2/ It is noteworthy that the Ministry of Planning is revising GDP data for FY 2013/2014 on a quarterly basis.

3/ Includes fixed capital formation and change in inventory. The change in inventory amounted to LE 5.6 billion during the period July-December 2014/15, compared to LE 6.7 billion during the period July-December 2013/14.

4/ Includes shares of foreign partners in the oil sector.



Source: Ministry of Planning.

# Revised

\* Preliminary, subject to change.

( ) Percent change over same period in previous year.

**1/ Using 2001/02 prices for the period 2002/03 - 2006/07, and 2006/07 prices for the period from 2007/08 to 2011/12, and 2011/12 prices for the period beginning 2012/13.**

2/ Includes fixed capital formation and change in inventory.

**Table ( 2 ) : Gross Domestic Product by Sector (at Factor Cost)**  
(In Current Prices)

							(LE Millions)	
	2008/09	2009/10	2010/11	2011/12	2012/13	2013/14 <sup>1/</sup>	July-Dec 2013/14 <sup>#</sup>	July-Dec 2014/15*
<b>GDP</b>	994,055	1,150,590	1,309,906	1,508,527	1,677,352	1,910,615	974,941	1,122,386
	(16.2)	(15.7)	(13.8)	(15.2)	(11.2)	(13.9)	(15.1)	(15.1)
<b>Total Commodity Sector</b>	508,001	591,903	682,156	808,871	899,251	1,038,684	532,369	595,350
	(16.3)	(16.5)	(15.2)	(18.6)	(11.2)	(15.5)	(16.9)	(11.8)
<b>Agriculture, Forestry and Fishing</b>	135,465	160,970	190,159	218,216	243,356	276,732	151,207	174,350
<b>Extractive Industry</b>	147,966	165,747	195,136	261,671	290,739	329,815	173,672	159,020
Petroleum	61,759	68,538	81,566	110,619	124,748	146,953	74,384	73,386
Natural Gas	82,206	92,538	108,206	145,040	159,344	175,371	95,593	81,453
	(11.9)	(12.6)	(16.9)	(34.0)	(9.9)	(10.1)	(20.3)	-(14.8)
Other	4,001	4,671	5,364	6,012	6,647	7,491	3,695	4,182
<b>Manufacturing Industry</b>	164,523	194,290	216,184	238,283	262,505	314,077	150,096	192,579
Petroleum Refinement	10,257	12,516	14,829	16,837	19,612	23,083	12,230	13,610
Other	154,266	181,774	201,355	221,446	242,893	290,995	137,866	178,969
<b>Electricity</b>	13,043	14,897	16,832	19,080	21,237	23,919	11,774	13,800
<b>Water</b>	2,977	3,390	3,775	4,239	4,667	5,207	2,677	3,031
<b>Construction and Building</b>	44,026	52,609	60,070	67,382	76,747	88,934	42,944	52,570
	(19.7)	(19.5)	(14.2)	(12.2)	(13.9)	(15.9)	(15.7)	(22.4)
<b>Total Production Services</b>	318,566	364,518	404,837	445,903	491,687	539,375	282,415	336,254
	(13.9)	(14.4)	(11.1)	(10.1)	(10.3)	(9.7)	(10.2)	(19.1)
Transport and Warehousing	40,962	47,400	53,351	60,513	67,212	76,132	37,579	43,750
Telecommunications	31,185	34,818	37,301	38,670	41,160	44,837	22,039	24,087
Suez Canal	26,826	25,803	29,311	31,203	32,396	37,236	18,348	20,872
	-(6.6)	-(3.8)	(13.6)	(6.5)	(3.8)	(14.9)	(17.6)	(13.8)
Wholesale and Retail Trade	113,398	133,774	150,658	166,330	183,831	209,096	115,856	134,032
Financial Intermediation	36,125	41,174	44,834	49,741	54,814	61,907	32,670	37,658
Insurance and Social Insurance	35,689	41,521	47,627	53,663	59,513	67,698	33,195	38,615
Tourism (Hotels and Restaurants)	34,382	40,028	41,755	45,783	52,761	42,469	22,727	37,240
	(6.0)	(16.4)	(4.3)	(9.6)	(15.2)	-(19.5)	-(18.7)	(63.9)
<b>Total Social Services</b>	167,488	194,170	222,912	253,753	286,414	332,557	160,158	190,782
	(20.5)	(15.9)	(14.8)	(13.8)	(12.9)	(16.1)	(18.2)	(19.1)
Real Estate	26,575	30,262	34,066	38,035	43,474	51,251	22,997	26,825
General Government	98,575	114,944	133,688	153,984	174,713	202,949	97,955	118,432
Education	11,133	12,828	14,558	16,229	17,950	20,684	10,203	11,791
Health	12,971	14,797	16,595	18,560	20,610	23,568	12,087	14,028
Other Services <sup>2/</sup>	18,234	21,339	24,005	26,945	29,667	34,105	16,916	19,706

Source: Ministry of Planning.

( ) Percent change over same period in the previous year.

# Revised

\* Preliminary, subject to change.

1/ It is noteworthy that the Ministry of Planning is revising GDP data for FY 2013/2014 on a quarterly basis.

2/ Includes sewage sector, and the information sector.

**Table ( 3 ) : Distribution of Total Investments by Economic Agents**  
**(July - December 2014/2015\*) <sup>1/</sup>**

(LE Millions)

	Government	Economic Authorities	Public Business Sector	Private Business Sector	Total	%to Total Investments
<b>Total Investments</b>	<b>17383</b>	<b>12208</b>	<b>12666</b>	<b>99783</b>	<b>142040</b>	<b>100</b>
<b>Commodity Sector</b>	<b>3374</b>	<b>1158</b>	<b>10152</b>	<b>53677</b>	<b>68361</b>	<b>48.1</b>
Agriculture, Irrigation & Fishing	2173	22	0.1	3661	5856	4.1
Crude Oil, Mining & Natural Gas <sup>2/</sup>	-	4	1652	31283	32938	23.2
Manufacturing Industries & Petroleum Products	37	3.7	3629	16733	20403	14.4
Electricity & Water	1150	1124	4496	750	7520	5.3
Construction & Building	14	5	375	1250	1644	1.2
<b>Production Services</b>	<b>2857</b>	<b>8116</b>	<b>2463</b>	<b>23164</b>	<b>36599</b>	<b>25.8</b>
Transportation & Communication <sup>3/</sup>	2839	8089	1891	14544	27363	19.3
Wholesale & Retail Trade	-	21	60	7120	7200	5.1
Financial Services, Insurance & Social Solidarity	8	0.1	392	-	400	0.3
Tourism	10	6	120	1500	1636	1.2
<b>Social Services</b>	<b>11153</b>	<b>2935</b>	<b>51</b>	<b>22941</b>	<b>37080</b>	<b>26.1</b>
Housing & Real Estate Activities	3069	111	-	15637	18817	13.2
Educational Services	1390	55	-	2705	4150	2.9
Health Services	1134	62	-	2198	3394	2.4
Other Services <sup>4/</sup>	5560	2706	51	2401	10719	7.5

REAL SECTOR INDICATORS

**Memorandum Items: Production Indices for Main Economic Sectors (2002 = 100)**

	2013/2014			2014/2015		
	Oct- Dec	Jan- Mar	Apr- Jun	Jul- Sep	Oct- Dec	Jan- Mar
<b>General Index</b>	<b>142.8</b>	<b>180.3</b>	<b>187.4</b>	<b>173.4</b>	<b>167.2</b>	<b>178.9</b>
Manufacturing Industries <sup>5/</sup>	135.2	168.5	196.9	170.0	162.9	175.3
Oil Products	153.3	159.3	167.1	162.9	156.2	165.5
Natural Gas	178.5	191.1	181.2	183.8	172.2	178.7
Electricity	189.0	205.1	218.6	199.3	193.1	203.2
Construction	181.2	216.5	161.7	207.0	155.5	181.8
Transportation <sup>6/</sup>	63.5	71.7	81.3	68.9	78.8	77.8
Suez Canal <sup>7/</sup>	255.2	272.8	285.4	283.7	259.5	275.8
Tourism	142.5	258.7	251.6	219.2	233.7	247.6

Source: Ministry of Planning.

\* Preliminary, subject to change.

-- Data unavailable.

1/ Excluding change in inventory.

2/ Including crude oil, natural gas and other extractions.

3/ Including Suez Canal and information.

4/ Including settlements, sewage services, and replacing and maintenance of assets.

5/ Manufacturing and construction index was revised during the period from March 2014 till March 2015.

6/ Excluding Suez Canal.

7/ Based on Suez Canal receipts in US dollars.