

Section 3

DOMESTIC PRICES

Table (4) Annual Inflation In Domestic Price Indices-----	17
Table (5) Inflation in Consumer Prices (Percent Change)-----	18
Table (6) Inflation in Producer Prices According to Economic Activity Classification-----	19
Table (7) Inflation in Producer Prices According to End use Classification-----	20
Table (8) Inflation in Producer Prices According to Stage of Processing Classification-----	20
Table (9) Exchange Rates-----	21

Table (4): Annual Inflation In Domestic Price Indices ^{1/ 2/ 3/}

Summary Profile
2013 - 2016

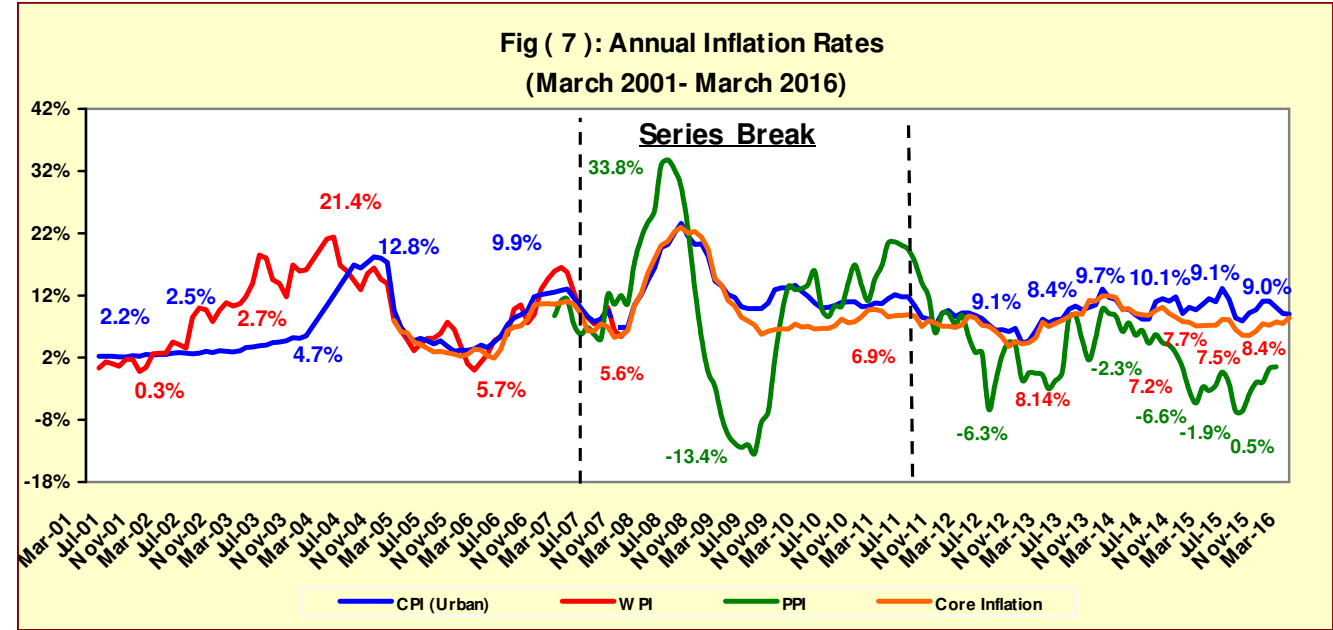
	2013				2014				2015				2016			
	CPI			PPI	CPI			PPI	CPI			PPI	CPI			PPI
	Urban	Overall Egypt	Core		Urban	Overall Egypt	Core		Urban	Overall Egypt	Core		Urban	Overall Egypt	Core	
January	6.3	6.6	5.2	-0.5	11.4	12.2	11.7	8.7	9.7	9.4	7.10	-5.3	10.1	10.7	7.73	0.5
February	8.2	8.7	7.7	-0.8	9.8	10.2	9.7	6.2	10.6	10.7	7.15	-2.7	9.1	9.5	7.50	
March	7.6	8.2	7.0	-3.0	9.8	10.2	9.9	7.6	11.5	11.8	7.21	-3.3	9.0	9.2	8.42	
April	8.1	8.8	7.5	-1.7	8.9	9.1	9.1	5.6	11.0	11.0	7.19	-2.4				
May	8.2	9.0	8.0	-0.4	8.2	8.3	8.9	6.4	13.1	13.5	8.14	-0.3				
June	9.8	10.9	8.6	8.4	8.2	8.2	8.8	4.3	11.4	11.5	8.07	-2.3				
July	10.3	11.5	9.1	8.9	11.0	11.1	9.6	5.7	8.4	8.3	6.49	-6.6				
August	9.7	10.9	9.0	4.8	11.5	11.4	10.1	4.4	7.9	7.9	5.61	-6.6				
September	10.1	11.1	11.2	1.6	11.1	11.1	9.1	4.0	9.2	9.4	5.55	-3.9				
October	10.5	11.5	11.1	5.1	11.8	11.5	8.5	2.7	9.7	10.3	6.26	-2.0				
November	13.0	14.2	11.95	9.8	9.1	8.5	7.8	0.3	11.1	11.8	7.40	-1.9				
December	11.7	12.5	11.91	9.1	10.1	9.8	7.7	-3.2	11.1	11.9	7.23	0.2				

Source: CAPMAS.

1/ Starting August 2009, CPI Urban data is based on the weights derived from 2008/2009 income and expenditure survey, and using January 2010 as a base month. Prior to this date, the basket and weights were derived from 2004/2005 income and expenditure survey taking January 2007 as a base

2/ The new series of Producer Price Index was issued by CAPMAS starting September 2007, using 2004/2005 prices of goods and services as a base period, and deriving sub-group weights from average values of agricultural, industrial and services production for the years 2002/2003 and 2003/2004. It is worth mentioning that Producer Price Index series before September 2007 are not available so far.

3/ The Central Bank of Egypt launched "Core Inflation Index" derived from the CAPMAS headline CPI, however it excludes items characterized by inherent price volatility and those with managed prices, specifically 'fruits and vegetables' (8.8 percent of headline CPI basket) as well as 'regulated items' (19.4 percent of headline CPI basket).



Source: CAPMAS.

Table (5): Inflation in Consumer Prices ^{1/}
(Percent Change)

	Year on Year Quarterly 2/				Year on Year Monthly 3/				
	Jan- Mar 2015	Jul-Sep 2015	Oct-Dec 2015	Jan-March 2016	Mar-15	Dec-15	Jan-16	Feb-16	Mar-16
CPI Inflation	10.6	8.5	10.6	9.4	11.5	11.1	10.1	9.1	9.0
Food & Beverages	7.7	9.2	14.0	12.6	9.2	14.6	13.4	12.5	12.1
Alcoholic Beverages & Tobacco	32.5	15.1	11.6	4.0	33.7	11.6	11.6	0.6	0.6
Clothing & Footwear	5.8	8.1	9.9	7.9	7.5	10.0	10.0	6.9	6.9
Housing, Water, Electricity and Fuel	11.0	6.4	6.0	1.9	13.4	6.0	2.7	2.9	0.1
Furniture and Equipment and Maintenance	4.9	4.4	5.9	10.5	4.5	6.8	10.6	10.3	10.6
Medical Care	5.8	2.2	7.5	10.7	2.0	9.3	9.3	9.3	13.8
Transportation Expenditures	22.0	1.6	2.4	2.3	22.0	2.4	2.2	2.2	2.7
Communication	-0.2	-0.1	-0.1	0.0	-0.2	0.0	0.0	0.0	0.0
Entertainment	16.0	9.2	10.8	11.1	15.2	10.9	11.0	10.9	11.5
Education	24.7	24.7	11.2	11.2	24.7	11.2	11.2	11.2	11.2
Hotels and Restaurants	15.7	10.7	15.5	16.3	16.2	15.3	15.4	14.8	18.6
Miscellaneous	5.2	2.2	2.6	3.7	4.5	3.4	2.8	3.8	4.6

Source: CAPMAS.

1/ In urban areas.

2/ Change in index over the same quarter in the previous year. Starting the period July-September 2010, data are based on new CPI series recently published by CAPMAS which use January 2010 as a base month and assume new weights for sub-groups in accordance with 2008/2009 income expenditure survey.

3/ Change in index over the same month in the previous year . Starting January 2009, data are based on new CPI series recently published by CAPMAS using January 2010 as base year.

Table (6): Inflation in Producer Prices According to Economic Activity Classification ^{1/}

(Percent Change)

	Year on Year Quarterly 2/				Year on Year Monthly 3/				
	Oct-Dec 2014	Apr-Jun 2015	Jul-Sep 2015	Oct-Dec 2015	Jan-15	Oct-15	Nov-15	Dec-15	Jan-16
Overall PPI Inflation	-0.1	-1.6	-5.7	-1.3	-5.3	-2.0	-1.9	0.2	0.5
Agriculture, Forestry and Fishing	1.7	4.7	2.7	7.0	-0.5	7.7	5.7	7.7	5.8
Crop and animal production, hunting, and related service activities	1.0	4.1	2.8	7.2	-1.4	8.2	5.6	7.8	6.2
Fishing and Aquaculture	10.8	12.6	1.2	4.6	11.9	1.7	6.6	5.7	1.4
Mining and Quarrying	-26.5	-37.9	-43.0	-34.8	-48.6	-37.1	-35.9	-30.5	-25.8
Extraction of crude petroleum and natural gas	-26.6	-38.4	-43.7	-35.5	-49.3	-37.7	-36.6	-31.2	-26.2
Other mining and quarrying	-16.3	0.1	4.1	0.4	-0.1	0.4	0.4	0.4	-13.3
Manufacturing	10.1	9.2	1.8	2.4	9.9	2.3	2.9	2.2	1.5
Food products	3.5	3.9	5.4	6.9	3.3	6.8	7.8	6.2	6.1
Beverages	0.4	0.5	0.1	0.1	0.5	0.1	0.1	0.1	0.0
Tobacco products	10.0	4.2	1.8	1.9	10.0	1.9	1.9	1.9	1.9
Textiles	0.6	0.2	0.1	10.7	0.7	10.7	10.7	10.7	10.5
Wearing apparel	4.0	1.9	0.2	0.3	1.9	0.4	0.4	0.2	0.4
Leather and related products	0.0	0.0	0.0	0.0	0.0	0.0	0.0	0.0	0.0
Wood and wood products	7.8	2.9	-0.4	0.5	5.6	0.1	0.7	0.9	1.1
Paper and paper products	4.4	5.2	4.9	2.6	3.9	2.6	2.6	2.6	1.8
Printing and reproduction of recorded media	0.0	38.1	38.1	38.1	18.3	38.1	38.1	38.1	16.7
Coke and refined petroleum	40.4	40.4	-0.1	-0.1	40.5	-0.1	-0.1	-0.1	0.1
Chemicals and chemical products	2.3	6.9	6.5	6.3	8.2	6.4	6.4	6.3	0.5
Pharmaceuticals, medicinal, chemical and botanical products	0.2	1.0	1.7	2.5	0.7	2.5	2.5	2.5	2.6
Rubber and plastic products	3.2	-4.2	-1.5	-5.4	1.3	-3.6	-6.2	-6.2	-1.6
Other non-metallic mineral products	13.0	3.7	-0.7	-0.1	13.4	-0.1	-0.1	-0.2	-0.1
Basic Metals	1.2	-2.5	-3.4	-3.0	-2.2	-4.1	-1.3	-3.6	-6.3
Fabricated Metal products, except machinery and equipment	6.8	6.6	5.1	0.5	5.7	0.8	0.8	0.0	0.6
Computer, electronic and optical products	-8.2	1.0	0.0	1.6	-3.1	1.6	1.6	1.6	1.6
Electrical equipment	2.3	1.1	1.1	0.8	0.8	0.9	0.9	0.7	1.6
Machinery and Equipment, n.o.i	5.2	2.7	1.7	-0.2	3.1	-0.2	-0.2	-0.2	0.8
Motor vehicles, trailers and semi-trailers	0.0	5.0	5.0	5.2	0.0	5.0	5.0	5.6	5.6
Other transport Equipment	0.0	0.0	0.0	0.0	0.0	0.0	0.0	0.0	0.0
Furniture	0.2	0.1	0.0	0.0	0.2	0.0	0.0	0.0	0.0
Other manufacturing	-1.2	-1.4	-1.6	1.6	3.0	5.5	2.9	-3.6	-4.3
Electricity, steam, gas and air conditioning supply	61.8	28.9	6.3	6.3	61.8	6.3	6.3	6.3	6.3
Water supply, sewerage, waste management, and remediation activities	7.3	16.2	25.0	18.8	12.0	20.1	20.1	16.2	13.9
Water collection, treatment and supply	12.5	25.6	42.8	32.2	17.2	32.2	32.2	32.2	26.9
Waste collection, treatment and disposal activities	2.3	7.0	7.0	4.5	7.0	7.0	7.0	0.0	0.0
Transportation and storage	14.7	19.1	20.1	6.1	19.1	6.1	6.1	6.1	3.0
Land transport and transport via Pipelines	10.4	10.4	9.6	9.6	10.4	9.6	9.6	9.6	9.6
Water transport	0.0	0.0	0.0	0.0	0.0	0.0	0.0	0.0	0.0
Air Transport	15.4	20.4	21.9	5.6	20.5	5.6	5.6	5.6	2.1
Postal and courier activities	0.0	0.0	0.0	0.0	0.0	0.0	0.0	0.0	0.0
Accommodation and Food Service Activities	3.3	8.9	1.8	1.8	1.5	0.8	0.8	3.7	2.9
Accommodation	-7.8	2.4	-0.6	-6.0	-9.3	-7.6	-7.6	-2.5	-4.0
Food and beverage service activities	19.5	16.9	4.5	10.4	16.7	10.4	10.4	10.4	10.4
Information and communications	0.0	0.0	0.0	0.0	0.0	0.0	0.0	0.0	0.0

Source: CAPMAS

1/ The new series of Producer Price Index was issued by CAPMAS starting September 2007, using 2004/2005 prices of goods and services as a base period, and deriving sub-group weights from average values of agricultural, industrial and services production for the years 2002/2003 and 2003/2004.

2/ Change in index over the same quarter in the previous year.

3/ Change in index over the same month in the previous year .

DOMESTIC PRICES

Table (7): Inflation in Producer Prices According to End Use Classification ^{1/}

	Year on Year Quarterly 2/				Year on Year Monthly 3/				
	Oct-Dec 2014	Apr-Jun 2015	Jul-Sep 2015	Oct-Dec 2015	Jan-15	Oct-15	Nov-15	Dec-15	Jan-16
Overall PPI Index	-0.1	-1.6	-5.7	-1.3	-5.3	-2.0	-1.9	0.2	0.5
Fuel	1.7	-98.0	23.7	-0.1	40.5	-0.1	-0.1	-0.1	0.1
Raw Materials	1.0	-98.5	-98.5	-30.9	-40.8	-33.2	-31.9	-26.8	-22.8
Intermediate Goods	10.8	0.6	0.6	-0.4	2.6	-0.6	0.1	-0.7	-2.2
Non-Durable Consumer Goods	-26.5	5.4	4.6	9.0	-0.4	9.6	8.0	9.5	7.8
Durable Consumer Goods	-26.6	2.1	2.1	9.8	1.0	9.8	9.8	9.8	10.5
Capital Goods	-16.3	1.7	1.7	1.1	0.7	1.1	1.1	1.1	1.2

Table (8): Inflation in Producer Prices According to Stage of Processing Classification ^{1/}

	Year on Year Quarterly 2/				Year on Year Monthly 3/				
	Oct-Dec 2014	Apr-Jun 2015	Jul-Sep 2015	Oct-Dec 2015	Jan-15	Oct-15	Nov-15	Dec-15	Jan-16
Overall PPI Index	-0.1	-1.6	-5.7	-1.3	-5.3	-2.0	-1.9	0.2	0.5
Fuel	-13.4	-23.9	-26.8	-27.0	-33.5	-29.5	-28.0	-22.8	-17.8
Cotton	40.6	40.6	40.6	-27.0	40.6	-27.0	-27.0	-27.0	-27.0
Raw Materials	0.7	3.9	2.9	7.7	-1.4	8.4	6.4	8.4	6.4
Semi-Finished Goods	1.8	2.1	3.0	4.7	1.5	5.2	5.1	3.7	4.0
Finished Goods	3.7	2.5	2.3	2.2	3.7	1.7	2.6	2.1	0.8

Source: CAPMAS.

1/ The new series of Producer Price Index was issued by CAPMAS starting September 2007, using 2004/2005 prices of goods and services as a base period, and deriving sub-group weights from average values of agricultural, industrial and services production for the years 2002/2003 and 2003/2004.

2/ Change in index over the same quarter in the previous year.

3/ Change in index over the same month in the previous year.

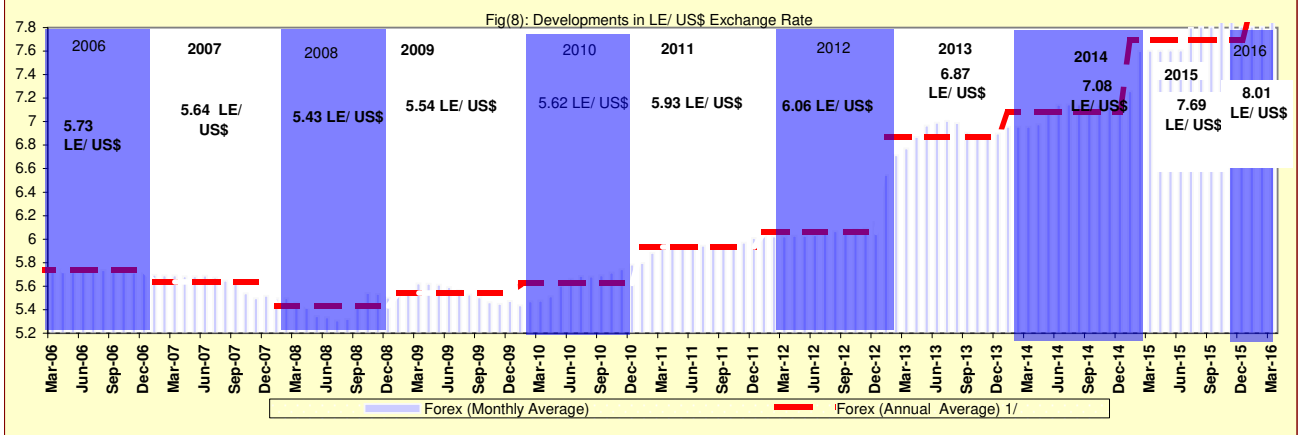
Table (9) : Exchange Rates

	Domestic Market			International Markets	
	(LE / currency units) ^{1/}			(US \$ / currency units)	
	US Dollar	Pound Sterling	Euro	Euro	Pound Sterling
Yearly Averages ^{2/}					
2005	5.779	10.569	7.226	1.246	1.821
2006	5.733	10.648	7.255	1.256	1.843
2007	5.636	11.448	7.836	1.370	2.002
2008	5.431	10.186	8.078	1.471	1.855
2009	5.542	8.764	7.804	1.394	1.565
2010	5.622	8.783	7.541	1.329	1.546
2011	5.933	9.535	8.277	1.393	1.604
2012	6.056	9.614	7.801	1.286	1.585
2013	6.869	10.749	9.126	1.328	1.564
2014	7.079	11.672	9.413	1.329	1.648
Monthly Averages					
Nov-13	6.884	11.085	9.298	1.350	1.609
Dec-13	6.899	11.292	9.446	1.370	1.637
Jan-14	6.956	11.466	9.491	1.363	1.647
Feb-14	6.956	11.519	9.499	1.365	1.655
Mar-14	6.957	11.577	9.624	1.383	1.663
Apr-14	6.978	11.685	9.643	1.381	1.673
May-14	7.081	11.927	9.730	1.374	1.685
Jun-14	7.143	12.086	9.724	1.360	1.690
Jul-14	7.145	12.216	9.689	1.355	1.708
Aug-14	7.145	11.951	9.532	1.333	1.671
Sep-14	7.145	11.672	9.235	1.291	1.632
Oct-14	7.146	11.502	9.066	1.267	1.608
Nov-14	7.145	11.286	8.918	1.248	1.579
Dec-14	7.145	11.179	8.810	1.232	1.563
Jan-15	7.259	11.007	8.456	1.167	1.518
Feb-15	7.600	11.675	8.657	1.135	1.531
Mar-15	7.602	11.441	8.271	1.084	1.500
Apr-15	7.604	11.368	8.223	1.079	1.492
May-15	7.606	11.792	8.525	1.117	1.545
Jun-15	7.606	11.878	8.558	1.121	1.556
Jul-15	7.801	12.137	8.589	1.101	1.556
Aug-15	7.808	12.206	8.711	1.113	1.559
Sep-15	7.808	12.016	8.798	1.124	1.535
Oct-15	7.917	12.147	8.893	1.225	1.533
Nov-15	7.902	12.006	8.483	1.073	1.519
Dec-15	7.808	11.745	8.531	1.090	1.500
Jan-16	7.808	11.290	8.510	1.087	1.441
Feb-16	7.807	11.335	8.568	1.091	1.388
Mar-16	8.407	11.980	9.359	1.113	1.425

Sources: Central Bank of Egypt, Reuters and Oanda (www.oanda.com).

1/ Average of the Bid / Ask rates. (Mid Point)

2/ Calendar year.



Source: Central Bank of Egypt and Reuters.

1/ Calendar year average.