

Section 3

DOMESTIC PRICES

Table (4) Annual Inflation In Domestic Price Indices-----	17
Table (5) Inflation in Consumer Prices (Percent Change)-----	18
Table (6) Inflation in Producer Prices According to Economic Activity Classification-----	19
Table (7) Inflation in Producer Prices According to End use Classification-----	20
Table (8) Inflation in Producer Prices According to Stage of Processing Classification-----	20
Table (9) Exchange Rates-----	21

Table (4): Annual Inflation In Domestic Price Indices ^{1/ 2/ 3/}

Summary Profile
2011 - 2014

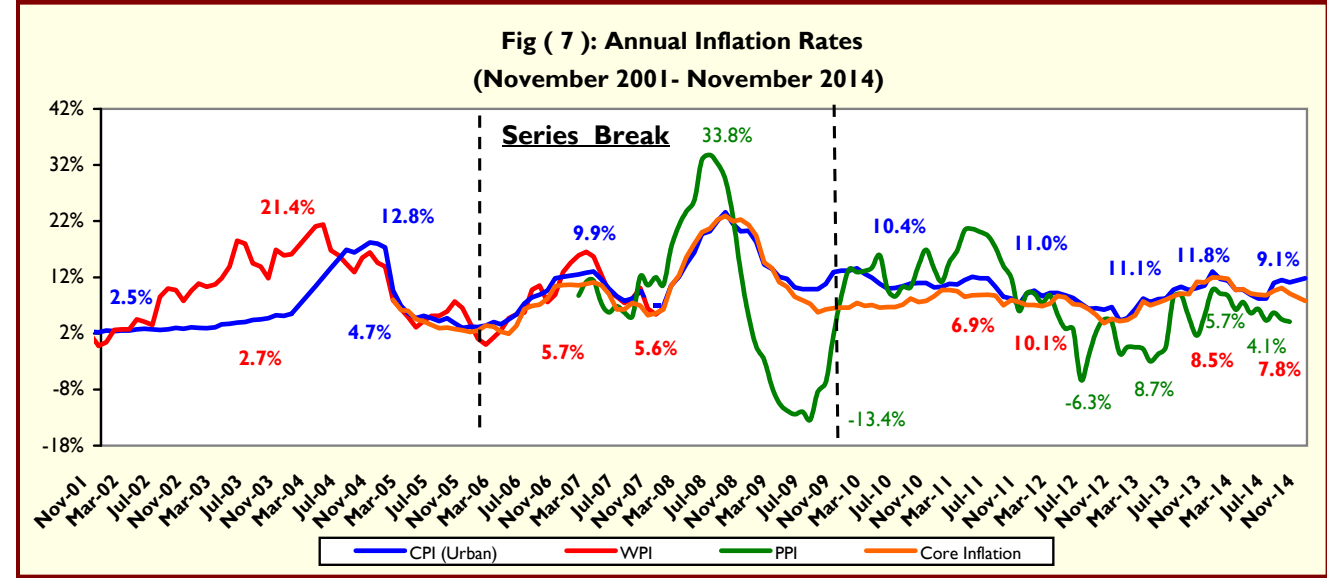
	2011				2012				2013				2014			
	CPI			PPI	CPI			PPI	CPI			PPI	CPI			PPI
	Urban	Overall Egypt	Core		Urban	Overall Egypt	Core		Urban	Overall Egypt	Core		Urban	Overall Egypt	Core	
January	10.8	11.0	9.7	14.7	8.6	9.2	6.9	7.4	6.3	6.6	5.2	-0.5	11.4	12.2	11.7	8.7
February	10.7	10.8	9.5	16.8	9.2	9.9	7.3	8.8	8.2	8.7	7.7	-0.8	9.8	10.2	9.7	6.2
March	11.5	11.8	8.5	20.4	9.0	9.5	8.7	5.4	7.6	8.2	7.0	-3.0	9.8	10.2	9.9	7.6
April	12.1	12.4	8.8	20.5	8.8	9.3	8.4	2.9	8.1	8.8	7.5	-1.7	8.9	9.1	9.1	5.6
May	11.9	12.2	8.8	20.1	8.3	8.6	7.2	2.8	8.2	9.0	8.0	-0.4	8.2	8.3	8.9	6.4
June	11.8	12.1	8.9	19.4	7.3	7.4	7.0	-3.7	9.8	10.9	8.6	8.4	8.2	8.2	8.8	4.3
July	10.4	10.7	8.7	17.3	6.4	6.3	6.3	-2.1	10.3	11.5	9.1	8.9	11.0	11.1	9.6	5.7
August	8.5	8.8	7.0	14.0	6.5	6.3	5.3	2.3	9.7	10.9	9.0	4.8	11.5	11.4	10.1	4.5
September	8.2	8.5	7.9	11.8	6.2	6.3	3.8	4.5	10.1	11.1	11.2	1.6	11.1	11.1	9.1	4.1
October	7.1	7.5	7.6	6.0	6.7	7.0	4.6	4.0	10.5	11.5	11.1	5.1	11.8	11.5	8.5	
November	9.1	10.0	7.0	9.1	4.3	4.1	4.2	-1.6	13.0	14.2	11.95	9.8	9.1	8.5	7.8	
December	9.6	10.4	7.1	9.2	4.7	4.7	4.4	-0.4	11.7	12.5	11.91	9.1				

Source: CAPMAS.

1/ Starting August 2009, CPI Urban data is based on the weights derived from 2008/2009 income and expenditure survey, and using January 2010 as a base month. Prior to this date, the basket and weights were derived from 2004/2005 income and expenditure survey taking January 2007 as a base month.

2/ The new series of Producer Price Index was issued by CAPMAS starting September 2007, using 2004/2005 prices of goods and services as a base period, and deriving sub-group weights from average values of agricultural, industrial and services production for the years 2002/2003 and 2003/2004. It is worth mentioning that Producer Price Index series before September 2007 are not available so far.

3/ The Central Bank of Egypt launched "Core Inflation Index" derived from the CAPMAS headline CPI, however it excludes items characterized by inherent price volatility and those with managed prices, specifically 'fruits and vegetables' (6.9 percent of headline CPI basket) as well as 'regulated items' (18.7 percent of headline CPI basket).



Source: CAPMAS.

Table (5): Inflation in Consumer Prices ^{1/}
(Percent Change)

	Year on Year Quarterly 2/				Year on Year Monthly 3/				
	Jul-Sep 2013	Jan- Mar 2014	Apr-Jun 2014	Jul-Sep 2014	Nov-13	Aug-14	Sep-14	Oct-14	Nov-14
CPI Inflation	10.1	10.3	8.5	11.2	13.0	11.5	11.1	11.8	9.1
Food & Beverages	13.2	16.6	12.1	11.9	19.1	11.6	11.8	11.5	7.1
Tobacco	8.1	5.6	8.2	25.4	8.3	22.8	29.9	29.9	29.9
Clothing & Footwear	3.4	2.3	0.9	3.7	6.5	5.1	4.8	5.0	1.9
Housing, Water, Electricity and Fuel	4.8	1.3	2.3	6.6	6.1	6.7	6.5	5.6	2.5
Furniture and Equipment and Maintenance	9.0	11.7	11.0	8.5	13.2	10.8	5.3	5.7	5.4
Medical Care	10.6	10.7	12.0	13.6	9.7	14.2	14.2	14.2	14.2
Transportation Expenditures	4.3	6.3	6.8	26.0	7.5	28.1	22.0	21.9	22.0
Communication	0.0	1.3	1.6	1.5	-0.1	1.5	1.6	1.6	1.6
Entertainment	12.9	12.9	14.9	16.8	17.3	19.6	12.2	11.5	11.2
Education	11.4	3.7	3.7	3.7	3.8	3.8	3.8	24.7	24.7
Hotels and Restaurants	21.3	11.8	6.1	14.6	22.6	17.4	16.8	14.8	14.8
Miscellaneous	0.5	0.4	0.5	4.0	0.1	5.9	4.7	5.0	5.1

Source: CAPMAS.

1/ In urban areas.

2/ Change in index over the same quarter in the previous year . Starting the period July-September 2010, data are based on new CPI series recently published by CAPMAS which use January 2010 as a base month and assume new weights for sub-groups in accordance with 2008/2009 income expenditure survey.

3/ Change in index over the same month in the previous year . Starting January 2009, data are based on new CPI series recently published by CAPMAS using January 2010 as base year.

Table (6): Inflation in Producer Prices According to Economic Activity Classification "

(Percent Change)

	Year on Year Quarterly 2/				Year on Year Monthly 3/				
	Jul-Sep 2013	Jan- Mar 2014	Apr-Jun 2014	Jul-Sep 2014	Sep-13	Jun-14	Jul-14	Aug-14	Sep-14
Overall PPI Inflation 4/	5.0	7.5	5.4	4.8	1.6	4.3	5.7	4.5	4.1
Agriculture, Forestry and Fishing	8.1	18.8	8.6	3.1	-0.8	4.0	3.5	2.4	3.6
Crop and animal production, hunting, and related service activities	8.7	19.9	8.8	2.1	-1.2	3.6	2.6	1.3	2.6
Fishing and Aquaculture	0.5	6.1	6.6	17.2	5.0	9.0	16.0	18.7	16.8
Mining and Quarrying	0.6	-3.1	4.8	-6.9	-0.7	5.6	-2.1	-7.4	-11.0
Extraction of crude petroleum and natural gas	0.6	-2.9	5.1	-6.7	-0.8	6.0	-1.9	-7.3	-10.9
Other mining and quarrying	4.8	-15.5	-15.8	-14.1	4.8	-15.8	-14.2	-14.0	-14.0
Manufacturing	6.4	5.5	2.8	10.8	6.5	2.9	10.1	11.3	11.0
Food products	6.0	7.7	5.8	5.2	7.2	5.8	5.3	5.9	4.3
Beverages	18.8	18.8	15.1	0.4	18.8	8.3	0.4	0.4	0.4
Tobacco products	6.1	8.1	10.3	8.0	6.1	10.3	7.0	7.0	10.0
Textiles	4.6	0.9	1.3	1.4	4.6	1.6	1.4	1.4	1.4
Wearing apparel	0.5	10.2	9.6	11.5	0.5	9.6	11.5	11.5	11.5
Leather and related products	0.0	0.0	0.0	0.0	0.0	0.0	0.0	0.0	0.0
Wood and wood products	26.9	33.4	13.4	9.4	26.9	5.7	9.9	9.1	9.2
Paper and paper products	0.1	1.5	1.4	2.3	0.1	1.4	2.3	2.3	2.3
Printing and reproduction of recorded media	0.0	0.0	0.0	0.0	0.0	0.0	0.0	0.0	0.0
Coke and refined petroleum	2.1	0.9	0.0	40.4	2.1	0.0	40.4	40.4	40.4
Chemicals and chemical products	3.6	1.4	-0.1	0.9	2.8	0.0	0.8	0.8	1.0
Pharmaceuticals, medicinal, chemical and botanical products	0.8	-0.1	-0.5	-0.5	0.8	-0.5	-0.5	-0.5	-0.5
Rubber and plastic products	9.0	17.2	12.4	8.1	9.1	9.3	11.1	6.6	6.6
Other non-metallic mineral products	13.3	9.1	9.6	15.7	13.3	10.3	11.3	17.8	18.1
Basic Metals	12.4	5.1	-1.1	1.7	11.4	-0.9	-1.6	3.2	3.5
Fabricated Metal products, except machinery and equipment	31.2	31.8	-5.8	3.6	31.2	1.8	3.2	3.6	4.0
Computer, electronic and optical products	0.0	-2.7	-5.2	-4.3	0.0	-5.2	-4.3	-4.3	-4.3
Electrical equipment	5.9	5.2	2.4	1.8	5.9	2.4	1.8	1.8	1.8
Machinery and Equipment, n.o.i	5.7	11.1	5.8	7.4	5.7	5.8	7.4	7.4	7.4
Motor vehicles, trailers and semi-trailers	0.0	0.0	0.0	0.0	0.0	0.0	0.0	0.0	0.0
Other transport Equipment	0.0	0.0	0.0	0.0	0.0	0.0	0.0	0.0	0.0
Furniture	0.3	0.3	0.2	0.3	0.3	0.2	0.3	0.3	0.3
Other manufacturing	-6.9	-14.7	-4.5	-0.3	-13.2	-5.5	2.8	0.2	-3.7
Electricity, steam, gas and air conditioning supply	3.1	0.0	25.5	61.8	3.1	38.3	61.8	61.8	61.8
Water supply, sewerage, waste management, and remediation activities	0.0	12.1	12.1	14.4	0.0	12.1	12.1	12.1	19.0
Water collection, treatment and supply	0.0	28.2	28.2	33.5	0.0	28.2	28.2	28.2	44.2
Waste collection, treatment and disposal activities	0.0	0.0	0.0	0.0	0.0	0.0	0.0	0.0	0.0
Transportation and storage	0.0	5.5	5.5	7.0	0.0	5.6	7.0	7.0	7.0
Land transport and transport via Pipelines	0.0	0.7	0.7	11.1	0.0	0.7	11.1	11.1	11.1
Water transport	0.0	0.0	0.0	0.0	0.0	0.0	0.0	0.0	0.0
Air Transport	0.0	6.3	6.3	6.3	0.0	6.3	6.3	6.3	6.3
Postal and courier activities	0.0	0.0	0.0	0.0	0.0	0.0	0.0	0.0	0.0
Accommodation and Food Service Activities	-1.9	0.9	-6.4	2.3	-1.9	-6.4	2.3	2.3	2.3
Accommodation	-8.1	-1.0	-13.2	-10.0	-8.1	-13.2	-10.0	-10.0	-10.0
Food and beverage service activities	8.8	3.8	3.8	20.4	8.8	3.8	20.4	20.4	20.4
Information and communications	0.0	0.0	0.0	0.0	0.0	0.0	0.0	0.0	0.0

Source: CAPMAS.

1/ The new series of Producer Price Index was issued by CAPMAS starting September 2007, using 2004/2005 prices of goods and services as a base period, and deriving sub-group weights from average values of agricultural, industrial and services production for the years 2002/2003 and 2003/2004.

2/ Change in index over the same quarter in the previous year.

3/ Change in index over the same month in the previous year.

4/ It is noteworthy that detailed data for October and November 2014 are not yet available.

Table (7): Inflation in Producer Prices According to End Use Classification ^{1/}

	Year on Year Quarterly 2/				Year on Year Monthly 3/				
	Jul-Sep 2013	Jan- Mar 2014	Apr-Jun 2014	Jul-Sep 2014	Sep-13	Jun-14	Jul-14	Aug-14	Sep-14
Overall PPI Index ^{4/}	5.0	7.5	5.4	4.8	1.6	4.3	5.7	4.5	4.1
Fuel	2.1	0.9	0.0	13.5	2.1	0.0	40.4	40.4	40.4
Raw Materials	2.6	-1.7	4.6	2.7	1.5	5.3	-1.6	-6.1	-9.5
Intermediate Goods	8.3	5.6	1.3	1.6	7.7	1.8	2.0	4.1	4.3
Non-Durable Consumer Goods	7.3	18.0	9.3	6.9	-0.3	5.1	4.6	3.6	4.5
Durable Consumer Goods	8.6	2.9	-0.1	-0.3	8.6	-0.2	-0.5	-0.4	-0.4
Capital Goods	1.4	1.7	0.9	1.0	1.4	0.9	1.1	1.1	1.1

Table (8): Inflation in Producer Prices According to Stage of Processing Classification ^{1/}

	Year on Year Quarterly 2/				Year on Year Monthly 3/				
	Jul-Sep 2013	Jan- Mar 2014	Apr-Jun 2014	Jul-Sep 2014	Sep-13	Jun-14	Jul-14	Aug-14	Sep-14
Overall PPI Index ^{4/}	5.0	7.5	5.4	4.8	1.6	4.3	5.7	4.5	4.1
Fuel	1.0	-2.4	4.6	6.3	-0.2	5.3	8.9	3.8	0.6
Cotton	-2.2	2.7	2.7	2.7	-2.2	2.7	2.7	2.7	2.7
Raw Materials	8.5	18.6	8.3	5.7	-0.7	3.7	3.1	2.0	3.2
Semi-Finished Goods	4.2	5.4	4.5	4.2	5.2	4.5	3.6	4.1	2.6
Finished Goods	7.3	6.0	2.5	2.8	7.4	2.8	3.1	4.6	4.8

Source: CAPMAS.

1/ The new series of Producer Price Index was issued by CAPMAS starting September 2007, using 2004/2005 prices of goods and services as a base period, and deriving sub-group weights from average values of agricultural, industrial and services production for the years 2002/2003 and 2003/2004.

2/ Change in index over the same quarter in the previous year.

3/ Change in index over the same month in the previous year.

4/ It is noteworthy that detailed data for October and November 2014 are not yet available .

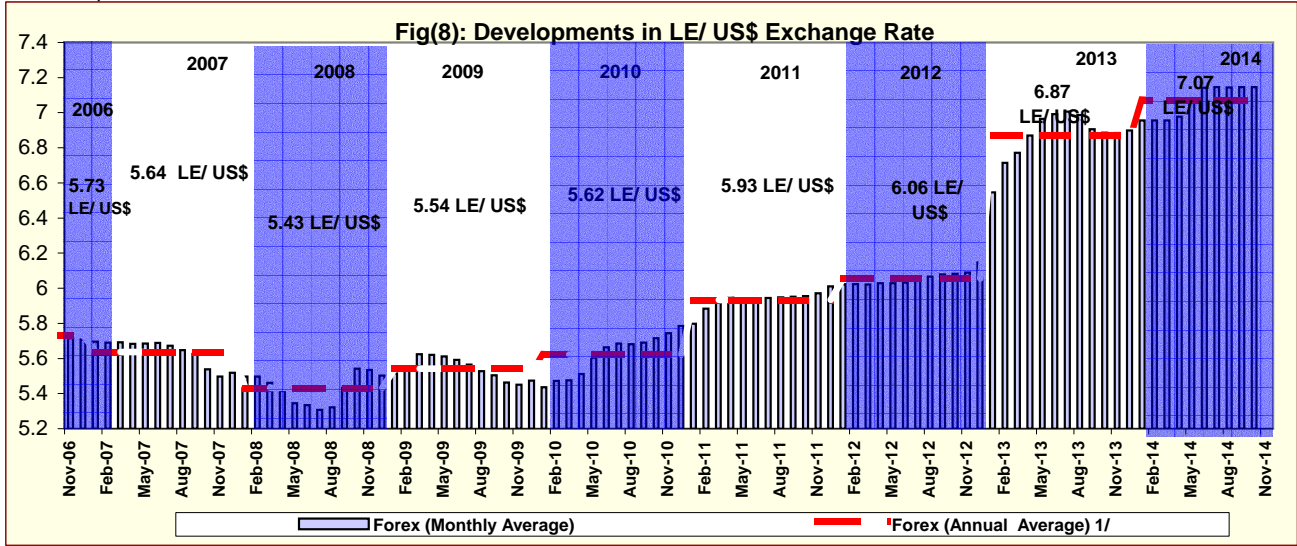
Table (9) : Exchange Rates

	Domestic Market			International Markets	
	(LE / currency units) ^{1/}			(US \$ / currency units)	
	US Dollar	Pound Sterling	Euro	Euro	Pound Sterling
Yearly Averages ^{2/}					
2003	5.861	9.595	6.654	1.132	1.636
2004	6.194	11.348	7.701	1.244	1.833
2005	5.779	10.569	7.226	1.246	1.821
2006	5.733	10.648	7.255	1.256	1.843
2007	5.636	11.448	7.836	1.370	2.002
2008	5.431	10.186	8.078	1.471	1.855
2009	5.542	8.764	7.804	1.394	1.565
2010	5.622	8.783	7.541	1.329	1.546
2011	5.933	9.535	8.277	1.393	1.604
2012	6.056	9.614	7.801	1.286	1.585
2013	6.869	10.749	9.126	1.328	1.564
Monthly Averages					
Jul-13	7.007	10.638	9.164	1.308	1.518
Aug-13	6.987	10.821	9.308	1.332	1.549
Sep-13	6.905	10.939	9.217	1.335	1.584
Oct-13	6.886	11.091	9.397	1.364	1.609
Nov-13	6.884	11.085	9.298	1.350	1.609
Dec-13	6.899	11.292	9.446	1.370	1.637
Jan-14	6.956	11.466	9.491	1.363	1.647
Feb-14	6.956	11.519	9.499	1.365	1.655
Mar-14	6.957	11.577	9.624	1.383	1.663
Apr-14	6.978	11.685	9.643	1.381	1.673
May-14	7.081	11.927	9.730	1.374	1.685
Jun-14	7.143	12.086	9.724	1.360	1.690
Jul-14	7.145	12.216	9.689	1.355	1.708
Aug-14	7.145	11.951	9.532	1.333	1.671
Sep-14	7.145	11.672	9.235	1.291	1.632
Oct-14	7.146	11.502	9.066	1.267	1.608
Nov-14	7.148	11.286	8.918	1.248	1.579

Sources: Central Bank of Egypt, Reuters and Oanda (www.oanda.com).

1/ Average of the Bid / Ask rates. (Mid Point)

2/ Calendar year.



Source: Central Bank of Egypt and Reuters.

1/ Calendar year average.